

Nepal Contemporary Political Situation Opinion Survey

Main Findings of NCPS XI & Trends

Sudhindra Sharma & Team Members

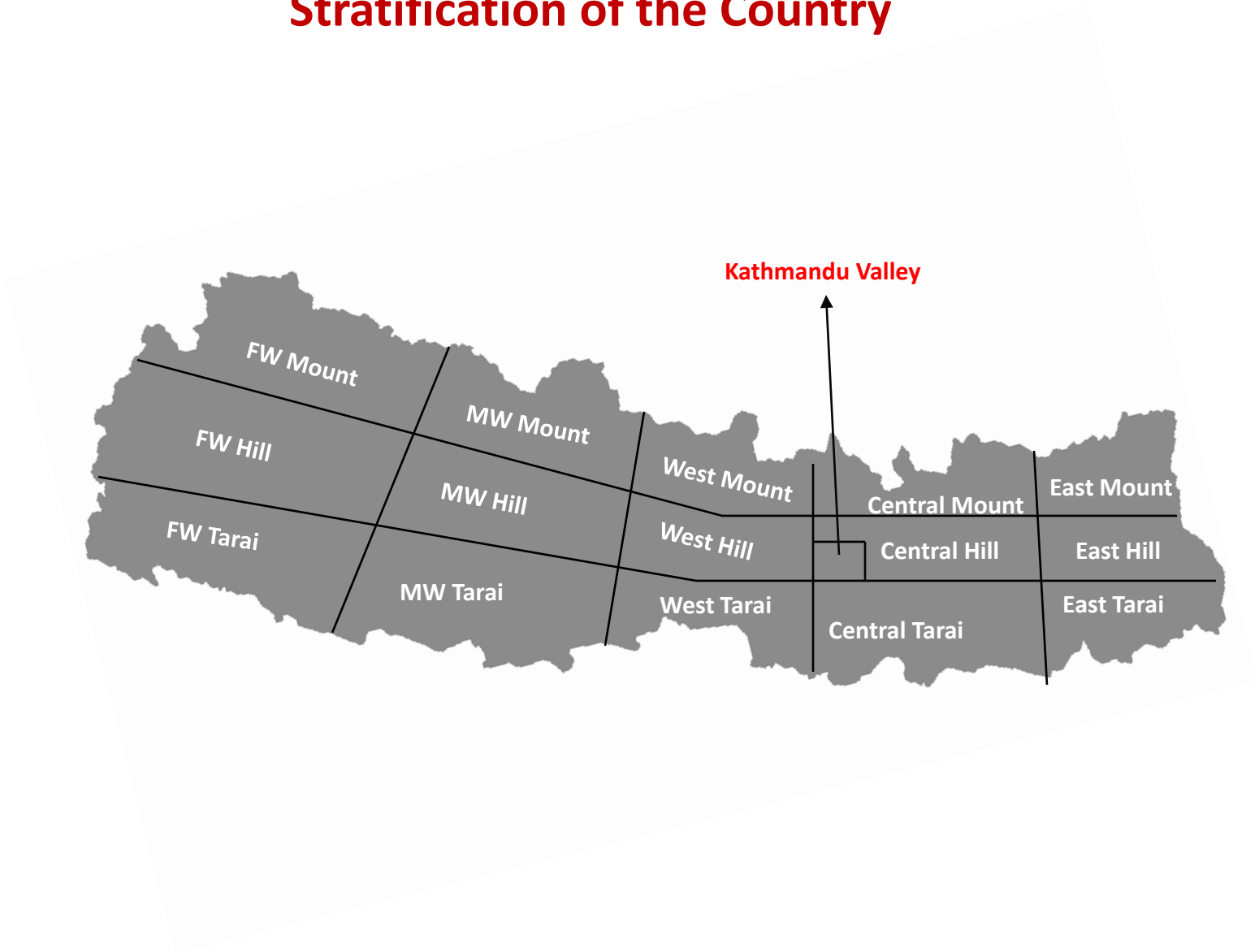
Interdisciplinary Analysts

February 01, 2015

Methodology

- A closed-ended questionnaire
- 3,000 respondents, 44 sample districts (randomly selected)
- Sample districts represent 5 development regions and 3 ecological zones
- 164 VDCs and 28 municipalities (randomly selected)
- Sample size (Respondents) are proportionally distributed across sample districts
- The margin of error is +/- 1.8 percent at a 95 percent confidence level at the national level
- Questionnaire was administered to individuals aged 18 and above living in the locality for at least 2 years

Stratification of the Country



75 Districts



Districts



VDCs



Wards



Households



Respondents

Sample Frame

1st Stage: Stratified Random Sampling

2nd Stage: Simple Random Sampling

3rd Stage: Simple Random Sampling

4th Stage: Right-Hand-Rule

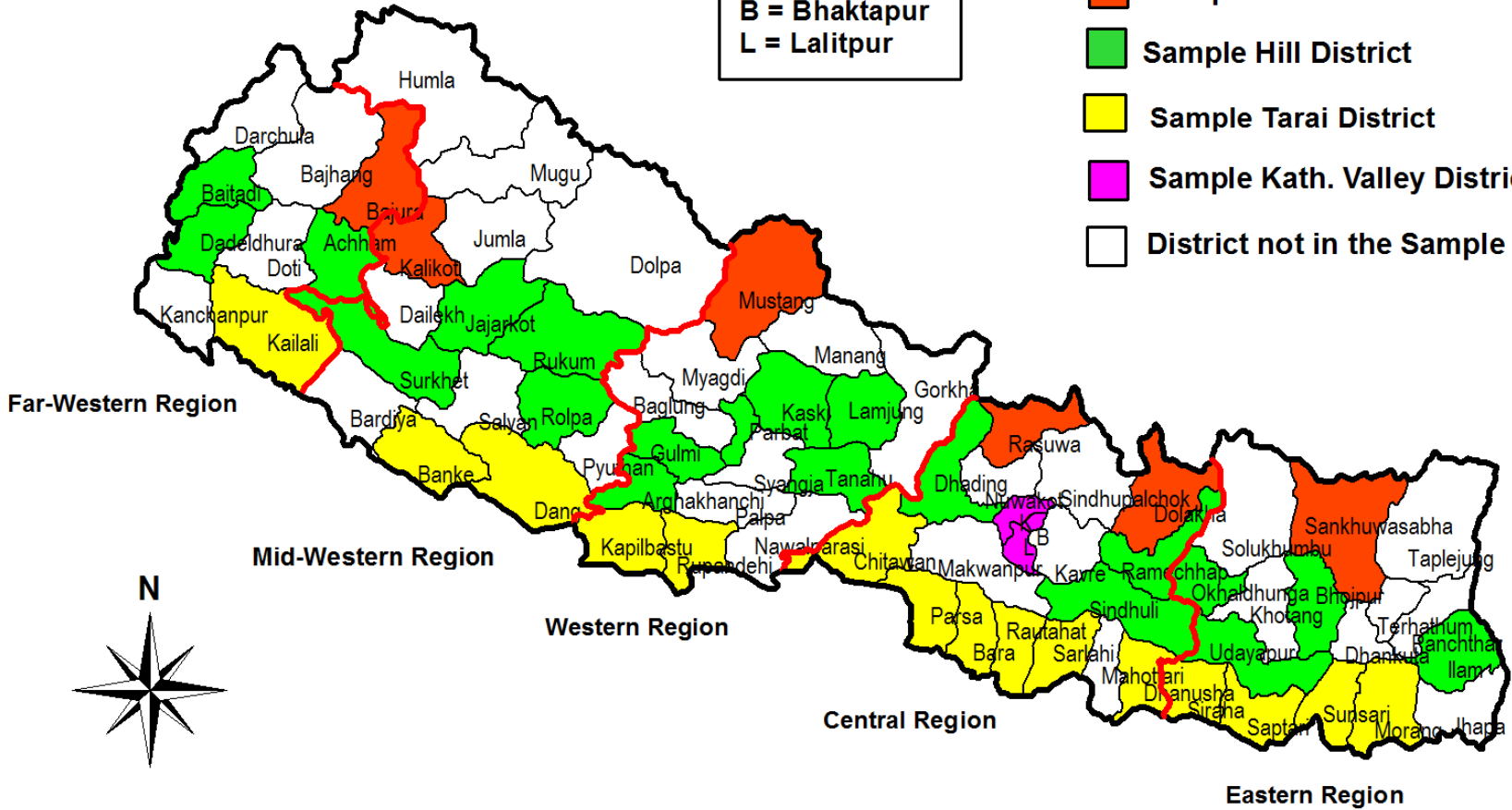
5th Stage: Kish-Grid Method

NCPS-XI Survey

Sample Distribution (District Level)

K = Kathmandu
B = Bhaktapur
L = Lalitpur

- Sample Mountain District
- Sample Hill District
- Sample Tarai District
- Sample Kath. Valley District
- District not in the Sample



NEPAL

NCPS Dates

S.N	NCPS Series	Fieldwork Nepali Date	Fieldwork English Date
1.	NCPS I	Push 2061	December 2004
2.	NCPS II	Magh 2062	January 2006
3.	NCPS III	Bhadau 2063	September 2006
4.	NCPS IV	Push 2063	January 2007
5.	NCPS V	Push 2064	January 2008
6.	NCPS VI	Bhadau 2067	August 2010
7.	NCPS VII	Falgun 2067	February 2011
8.	NCPS VIII	Asar 2068	June 2011
9.	NCPS IX	Chitra 2069	April 2012
10	NCPS X	Asar 2070	June 2013
11	NCPS XI	Asoj 2071	September 2014

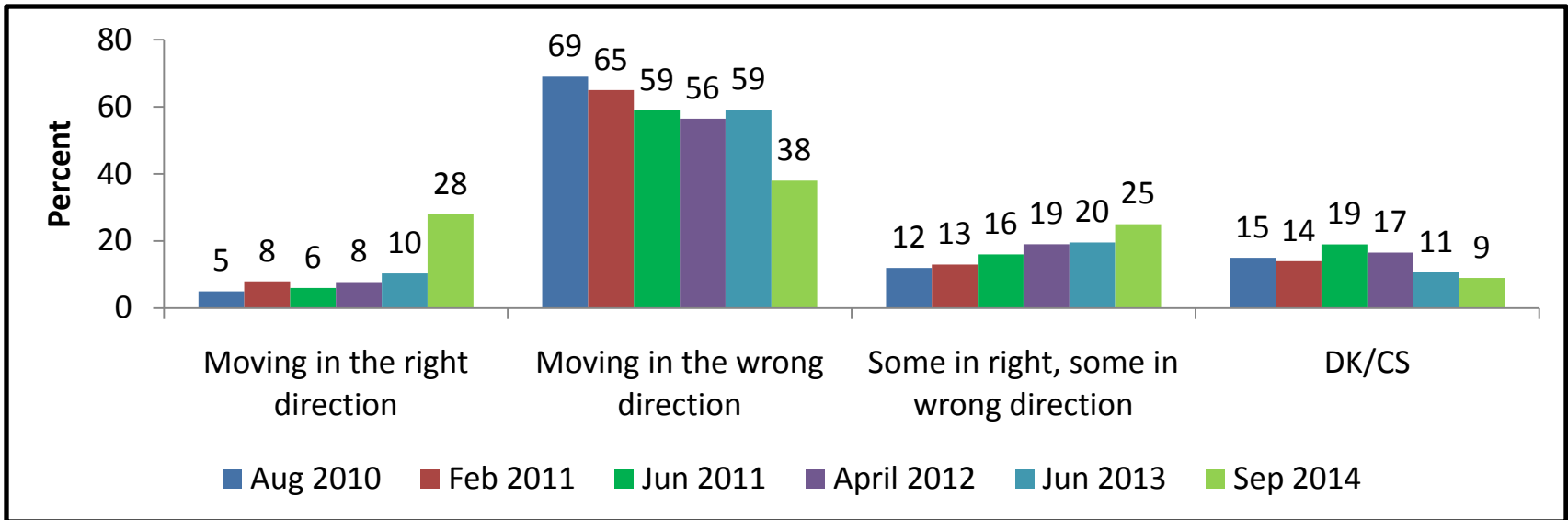
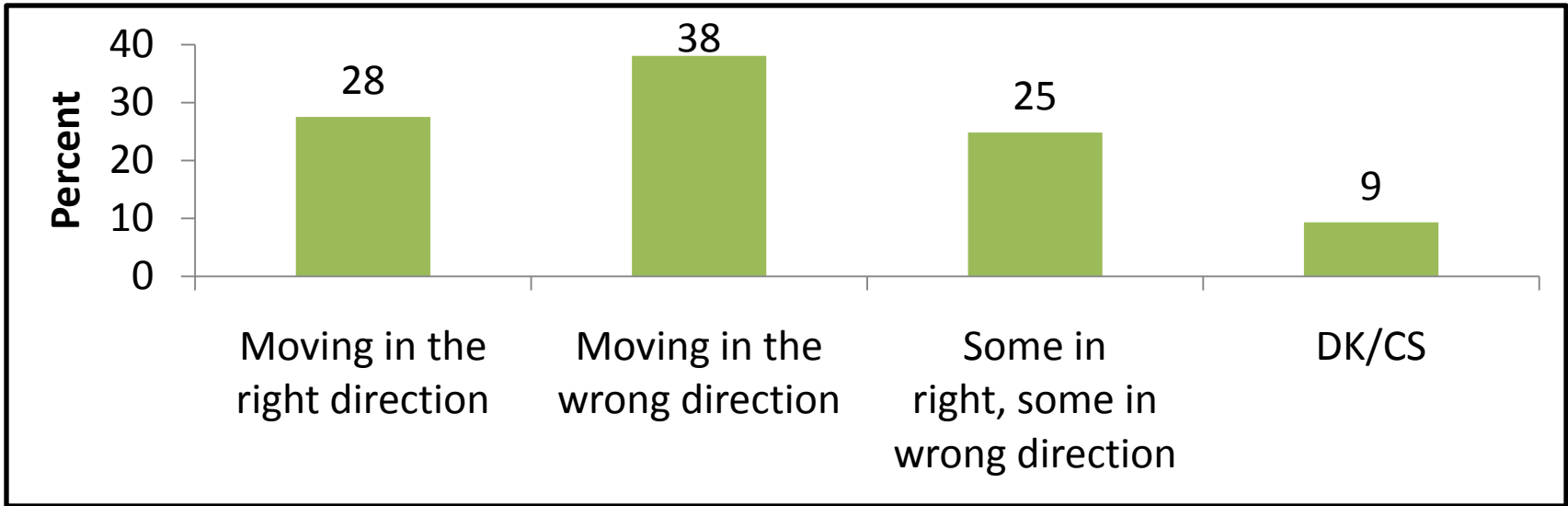
Date is reckoned according to the fieldwork period – not when the report was published.

Outline of the Presentation

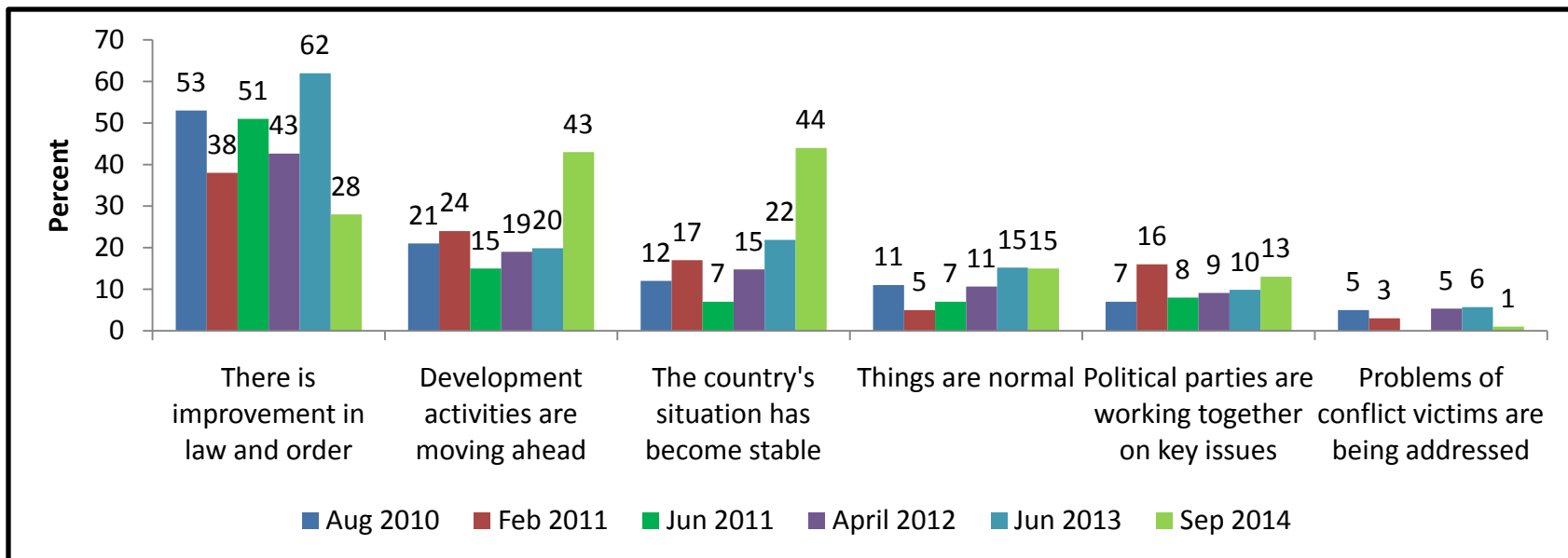
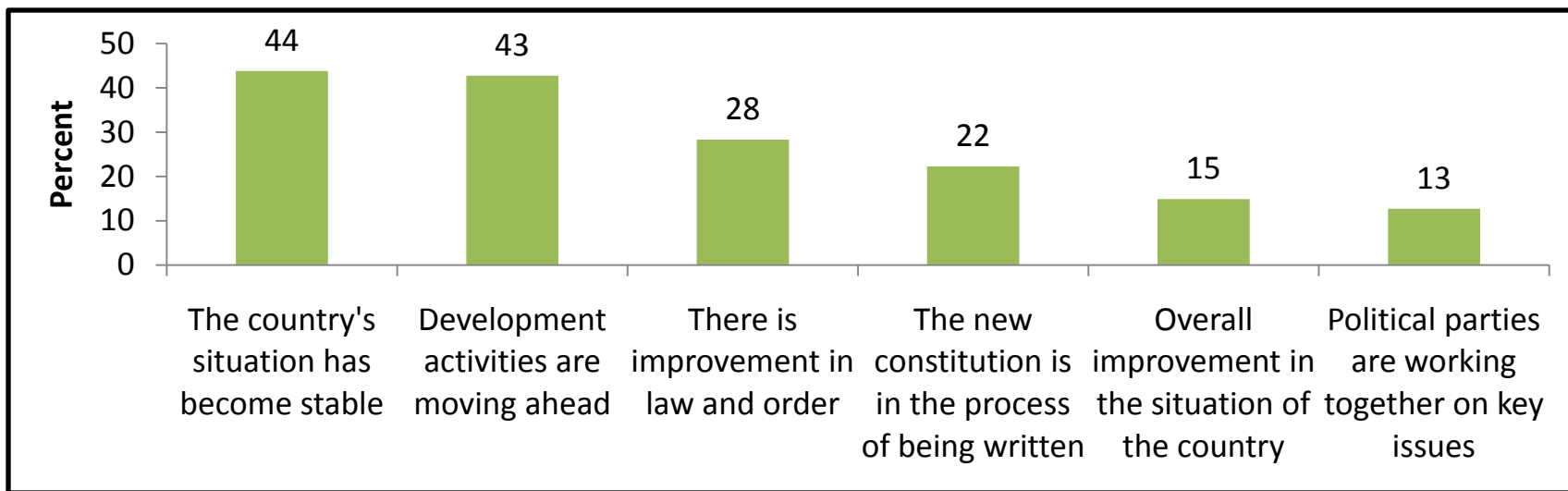
- A. Background
- B. Overall Direction, Identification of Problems & Current Socio-economic Situation
- C. Constituent Assembly and Constitutional Issues
- D. Federalism
- E. Trust towards Organization and Institutions
- F. Political Parties
- G. Contentious Issues

Section B: Overall Direction, Identification of Problems & Current Socio-economic Situation

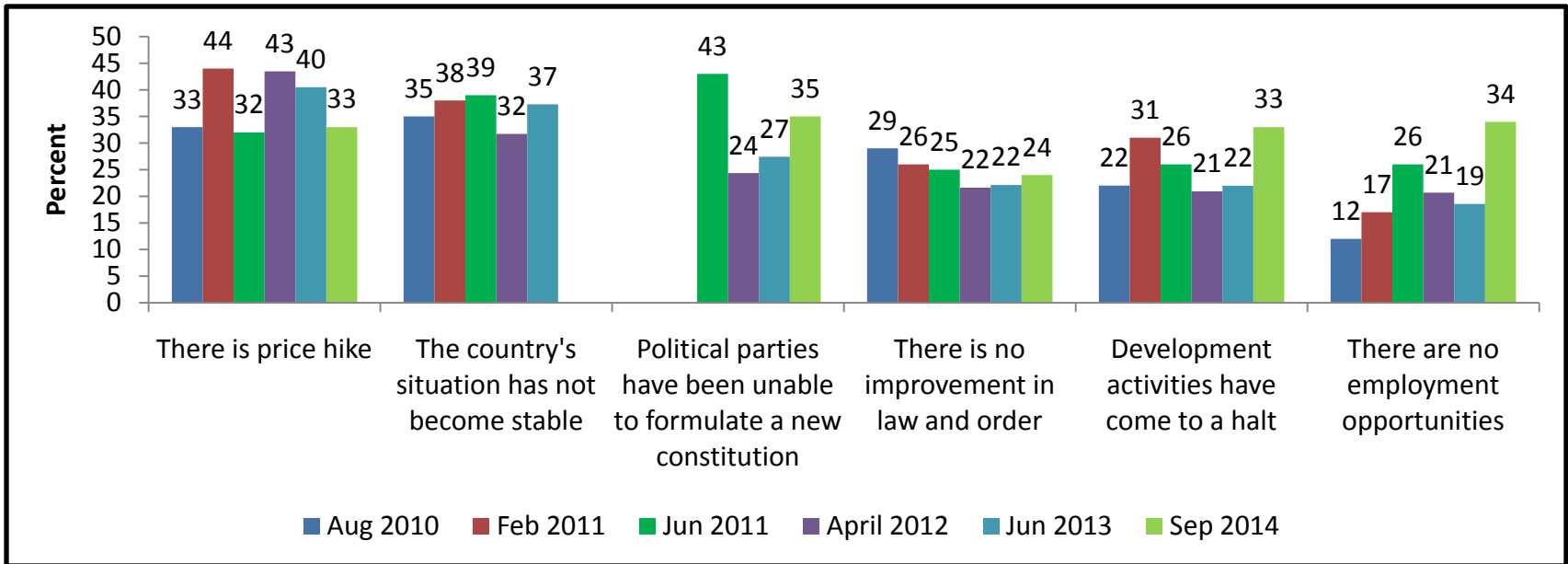
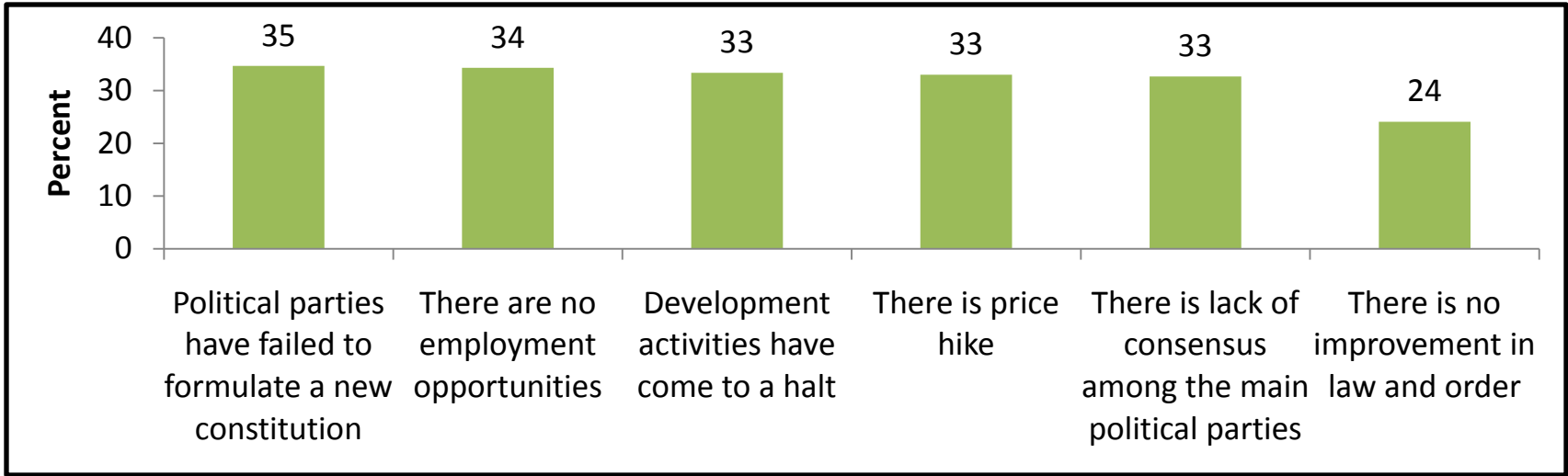
Generally speaking, do you think the country is moving in the right direction, or do you think it is moving in the wrong direction? [B1, Base= 3,000]



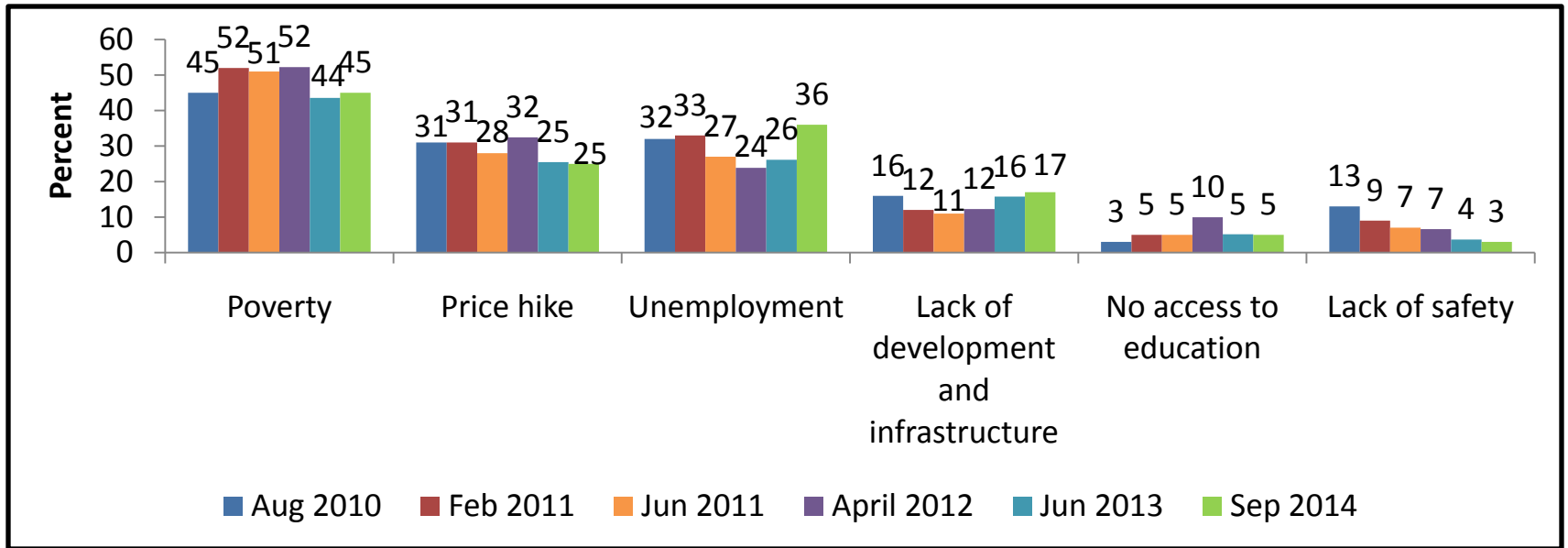
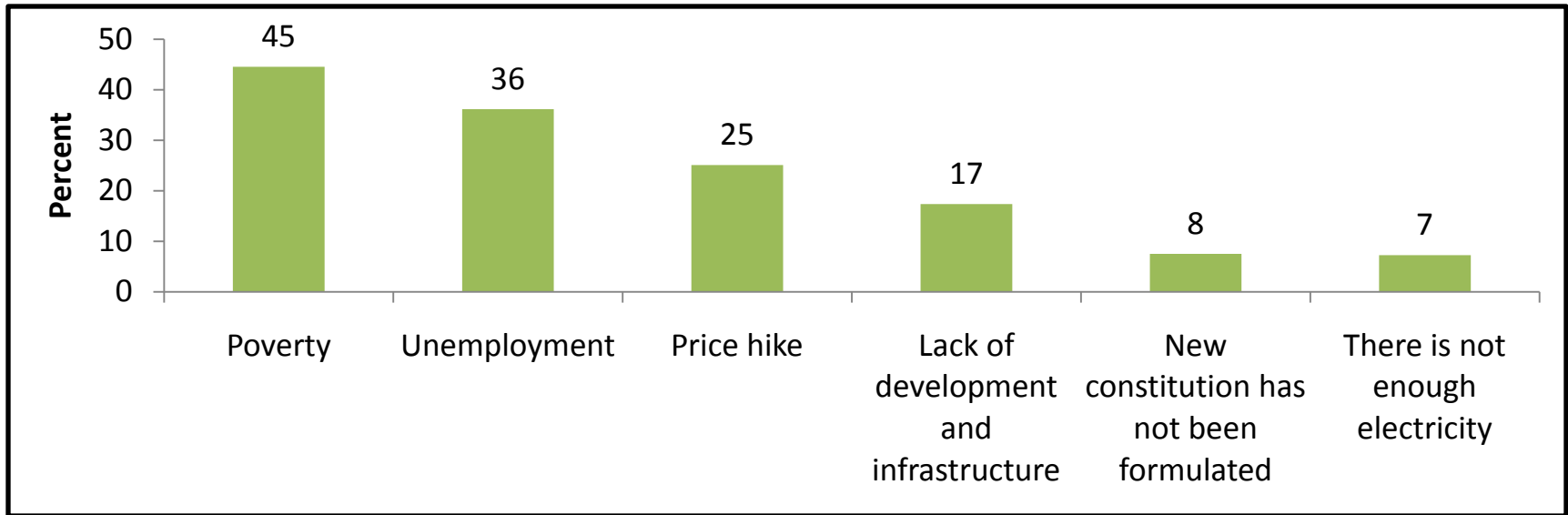
If you think the country is moving in the right direction, why do you think so? [B2, Base= 826, Percentage based on multiple responses]



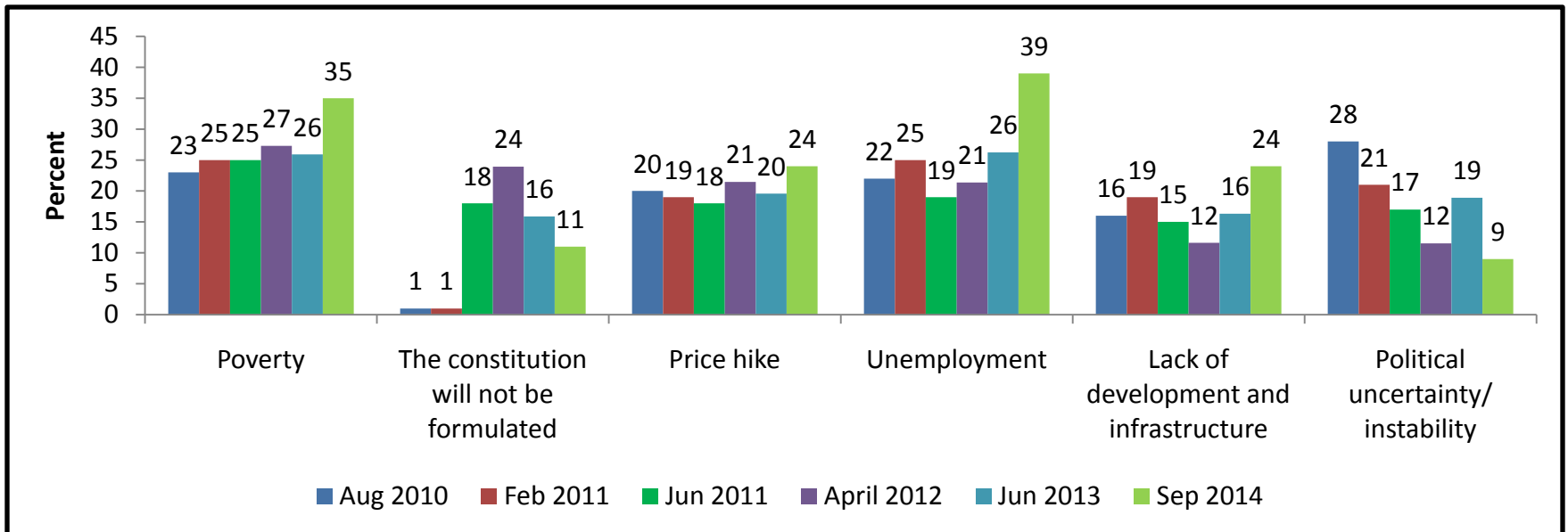
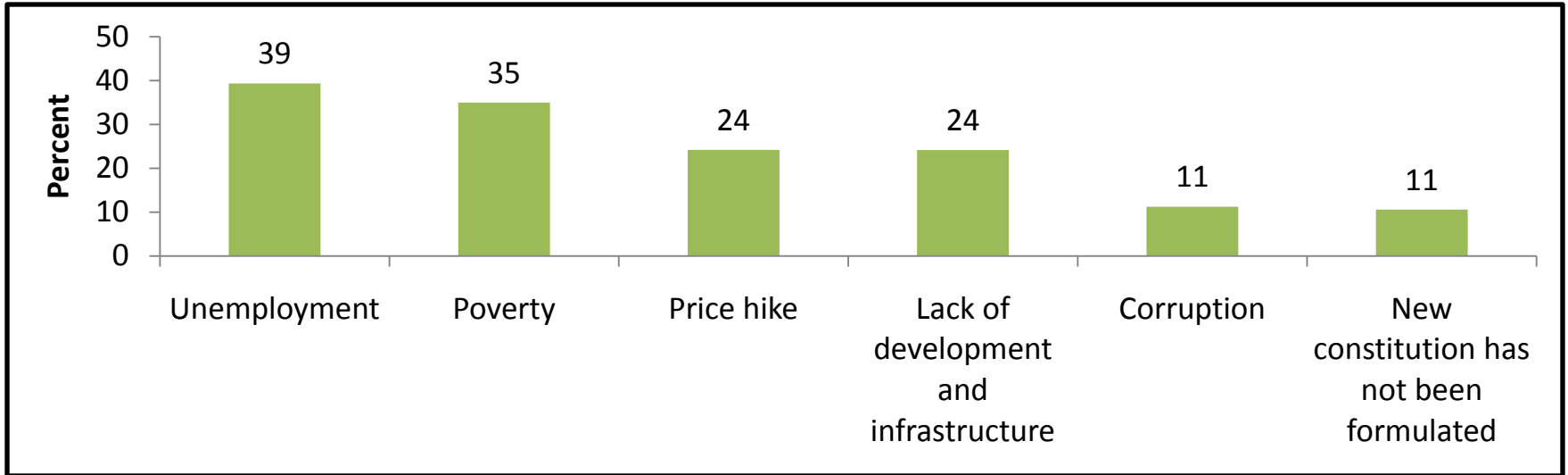
If you think the country is moving in the wrong direction, why do you think so? [B3, Base= 1,142, Percentage based on multiple responses]



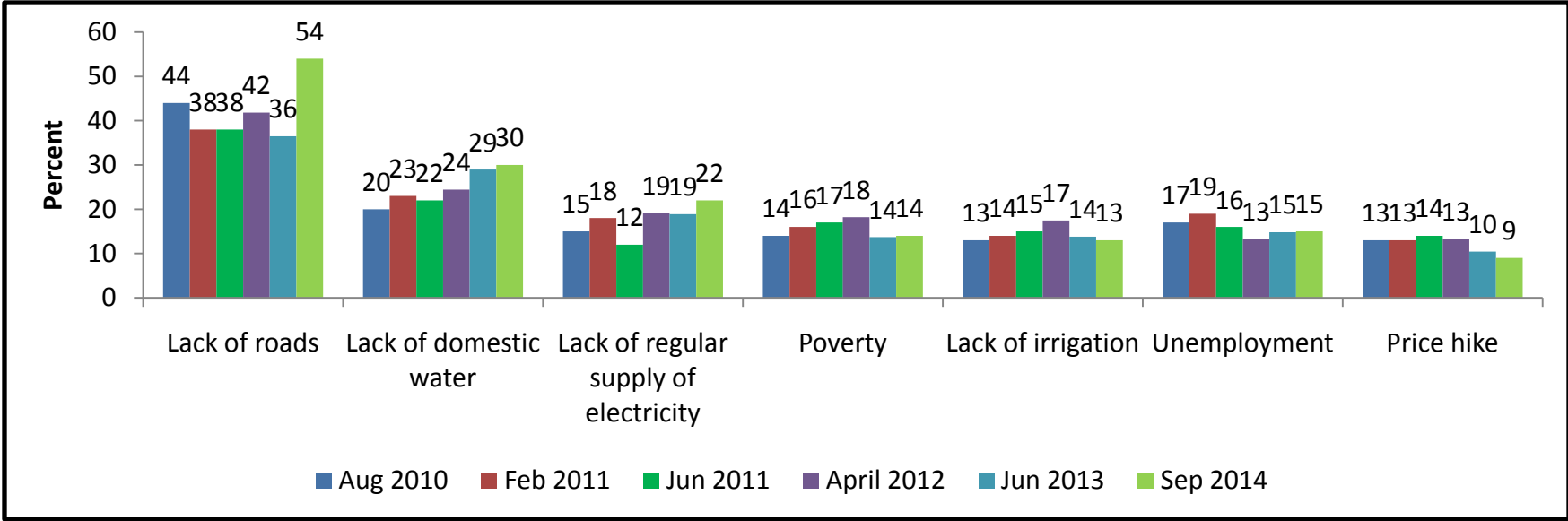
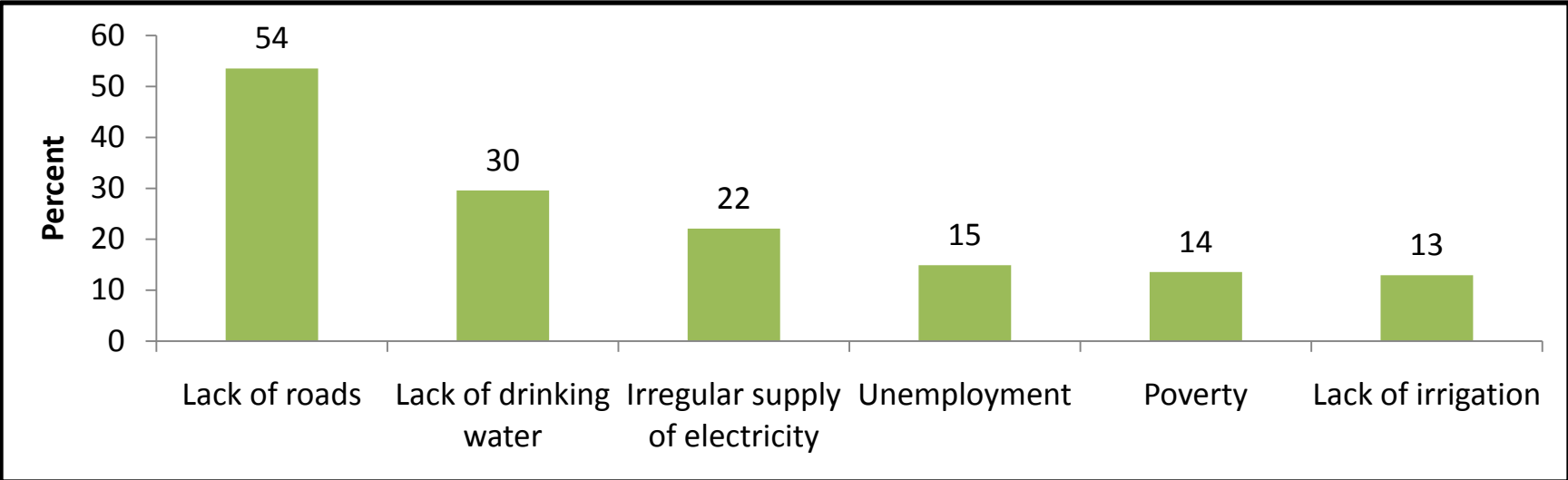
What causes you anxiety personally? [B4, Base=3, 000, Percentage based on multiple responses]



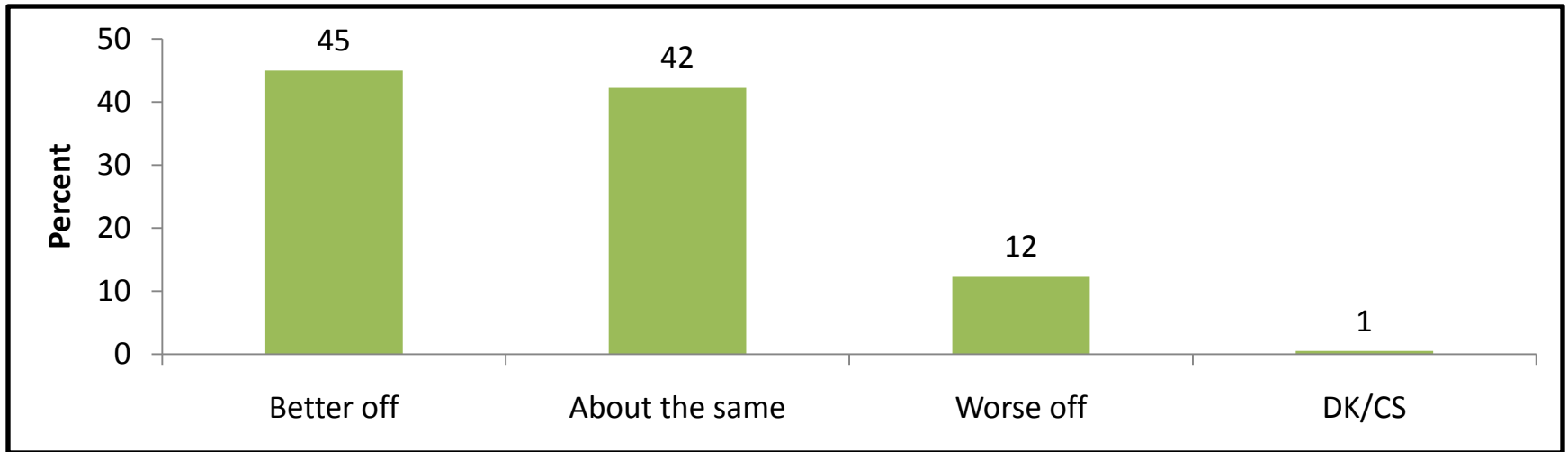
In your opinion, what are the two major problems facing the country today? [B5, Base= 3,000, Percentage based on multiple responses]



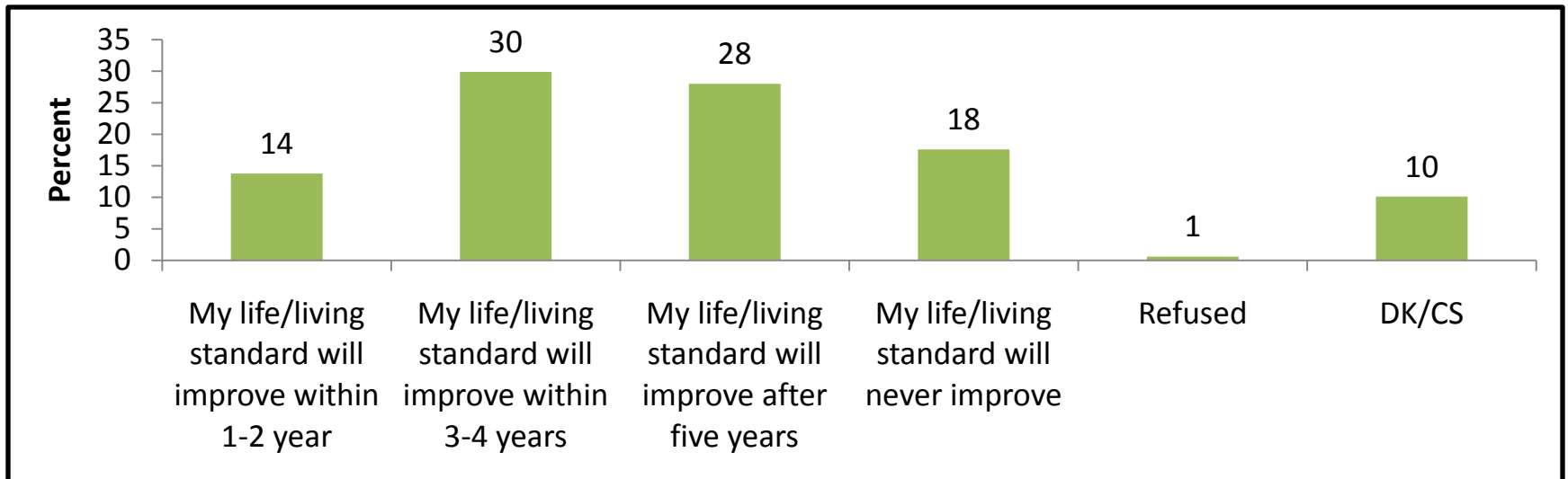
In your opinion, what are the two major problems facing your village/community? [B6, Base= 3,000, Percentage based on multiple responses]



If you have to compare with the past five years, do you think the economic situation of your family has become better off, or is it about the same, or has it worsened? [B7, Base= 3,000]

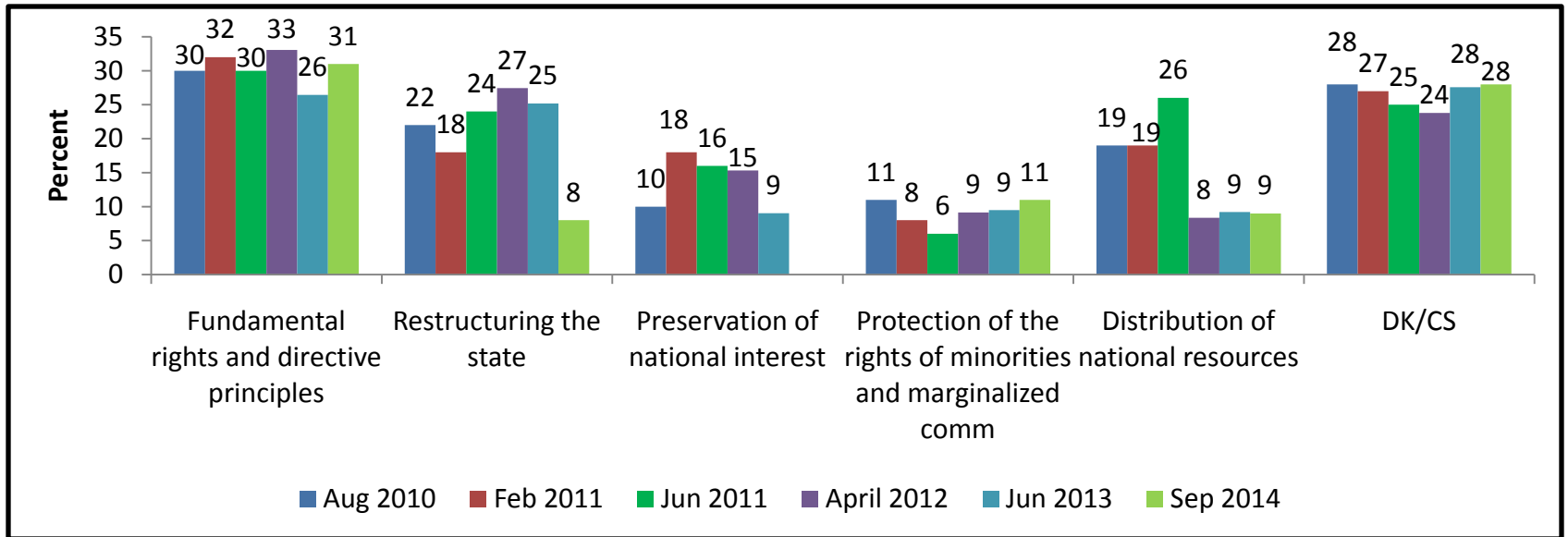
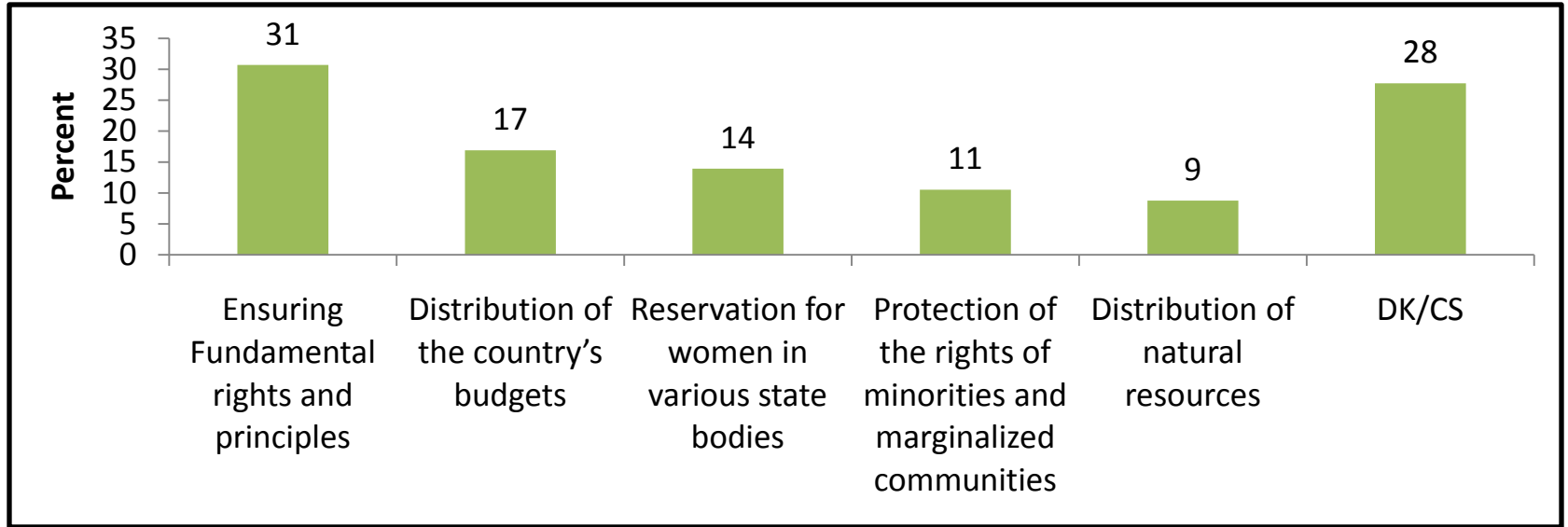


Some people expect that there will be improvement in their living standard in the future. Others think their living standard will not improve. Which of the following choices do you agree with? (Read Aloud) [B8, Base= 3,000]

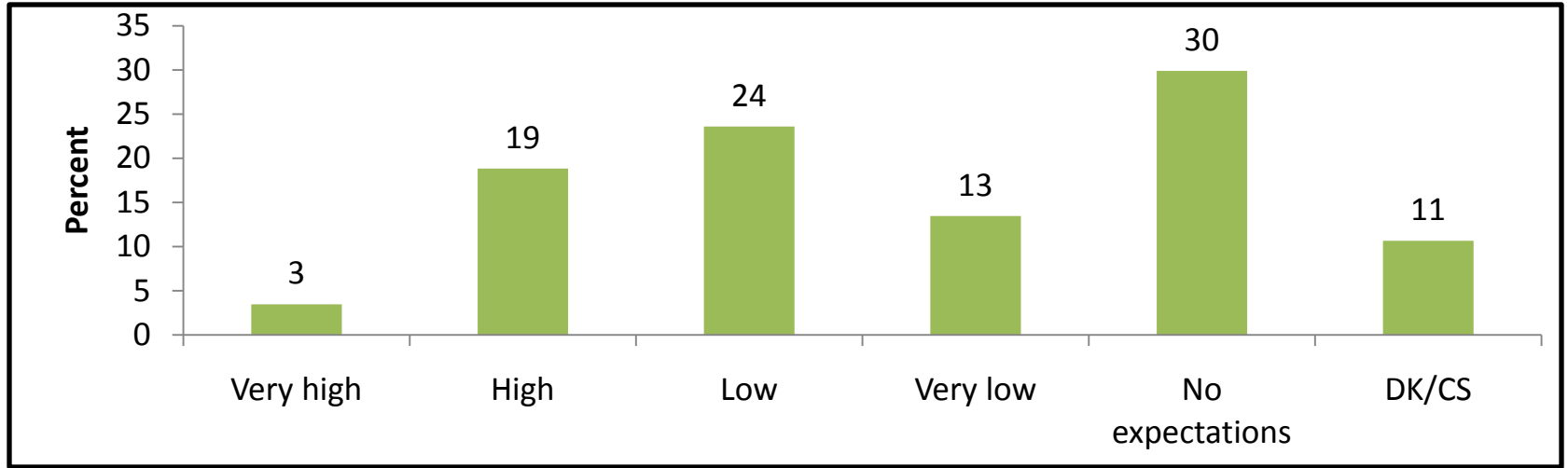


Section C: Constituent Assembly and Constitutional Issues

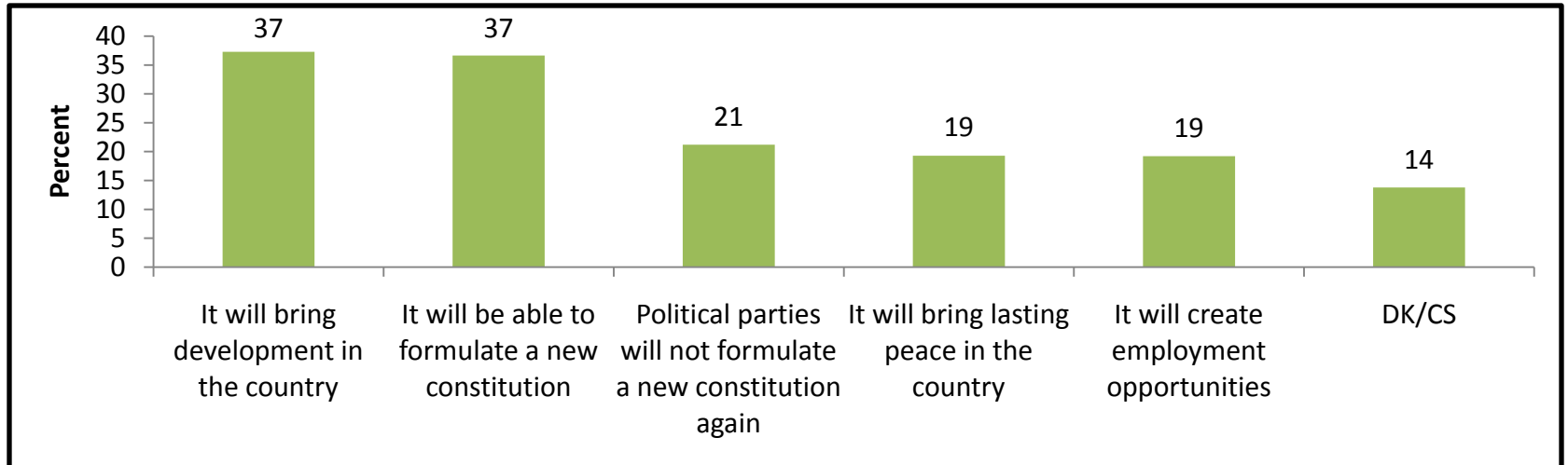
**In your opinion what are the top two priorities that the second CA must address? [Read Aloud, Rotate the items]
[C1, Base= 3,000, Percentage based on multiple responses]**



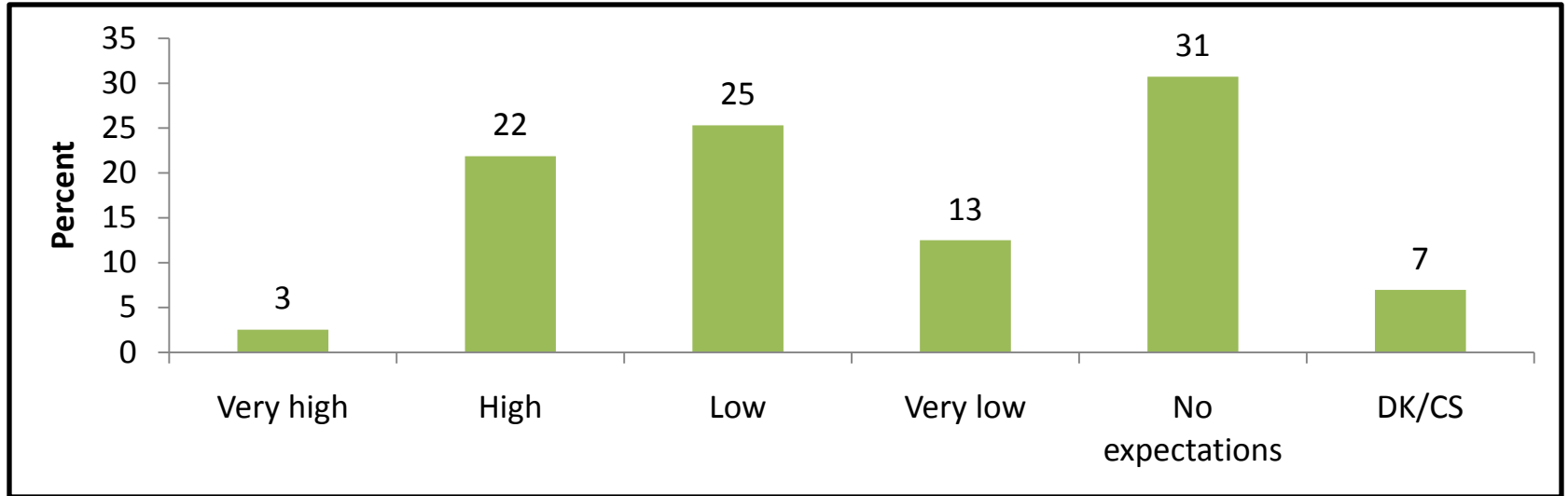
How would you rate your expectation of the current CA regarding constitution making? Would you say your expectations are: [C2, Base= 3,000]



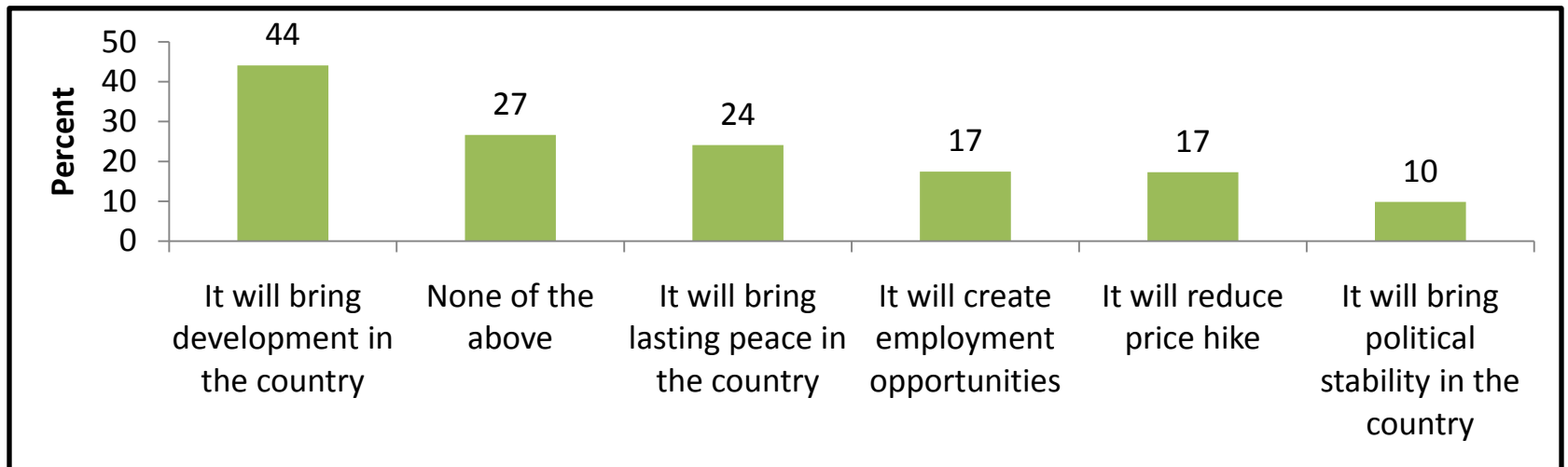
In more substantive terms, what are your expectations from the current CA? [C3, Base= 3,000, Percentage based on multiple responses]



How would you rate your expectation of the present government? Would you say your expectations are:
[C4, Base= 3,000]

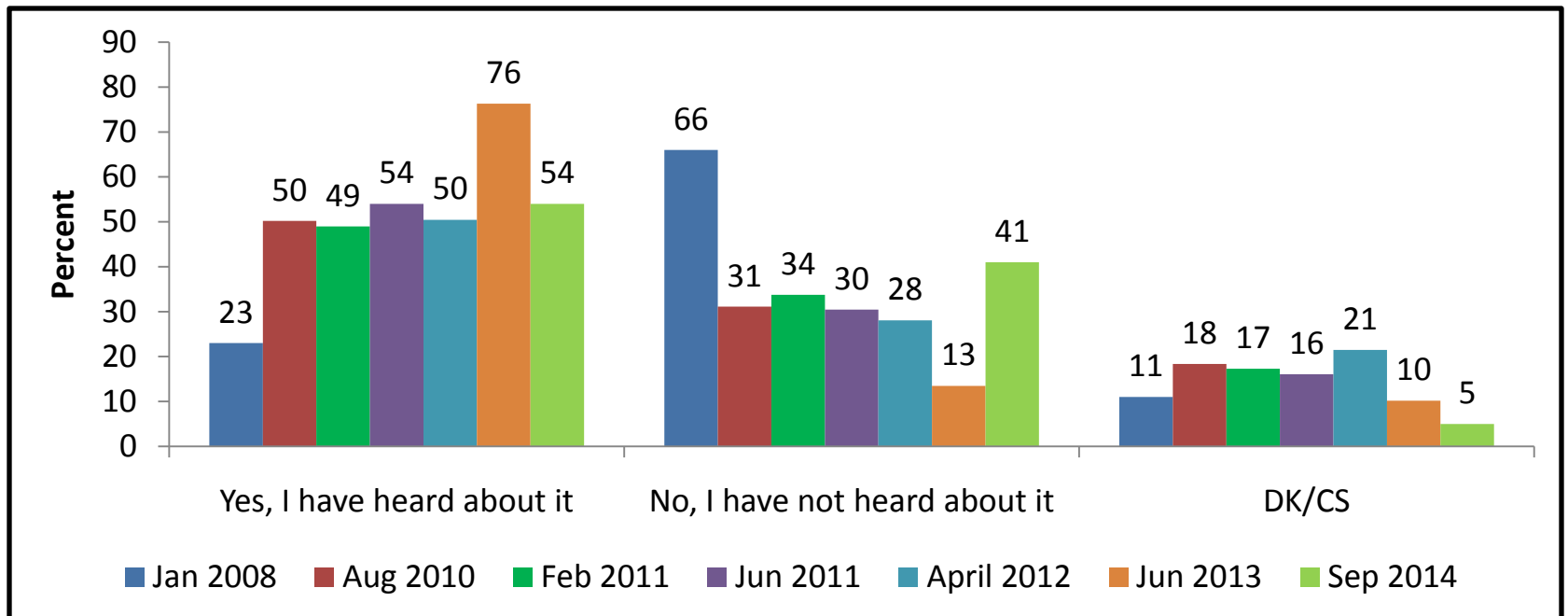
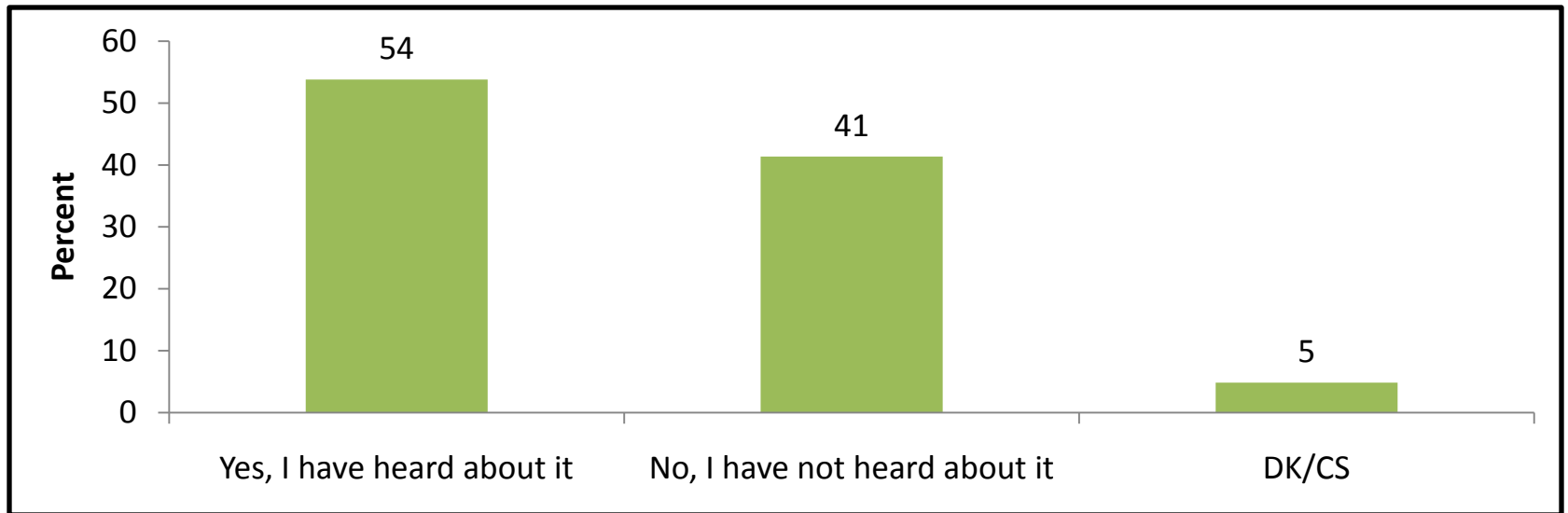


What are your expectations from the present government? [C5, Base= 3,000, Percentage based on multiple responses]

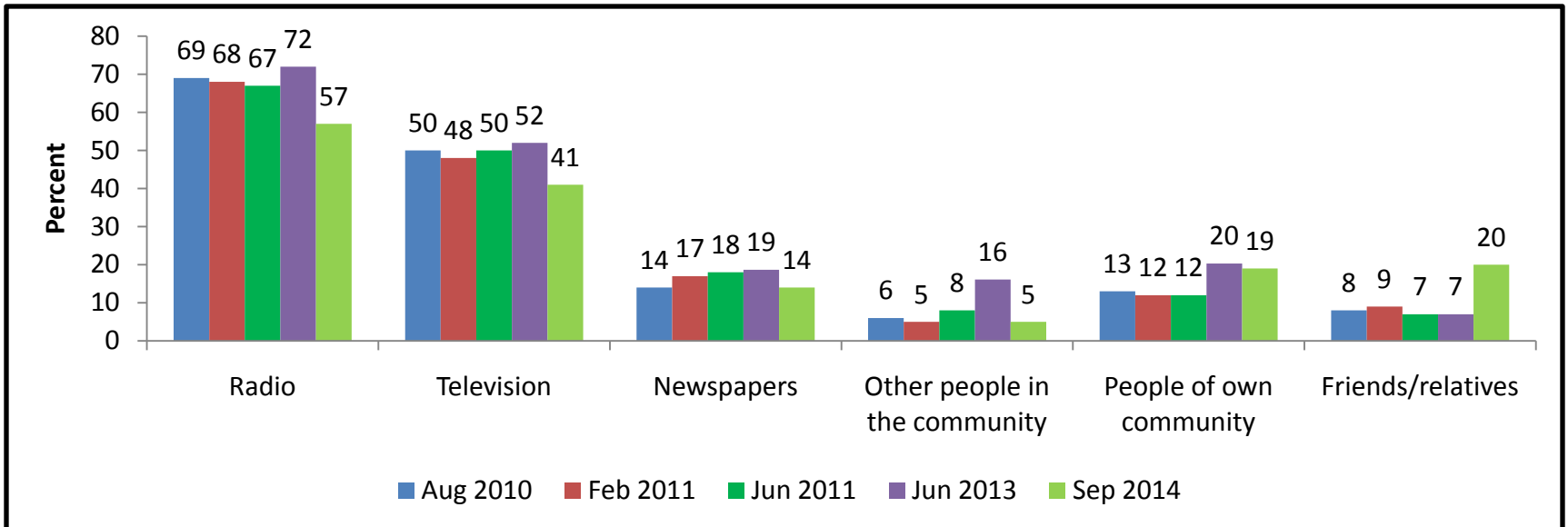
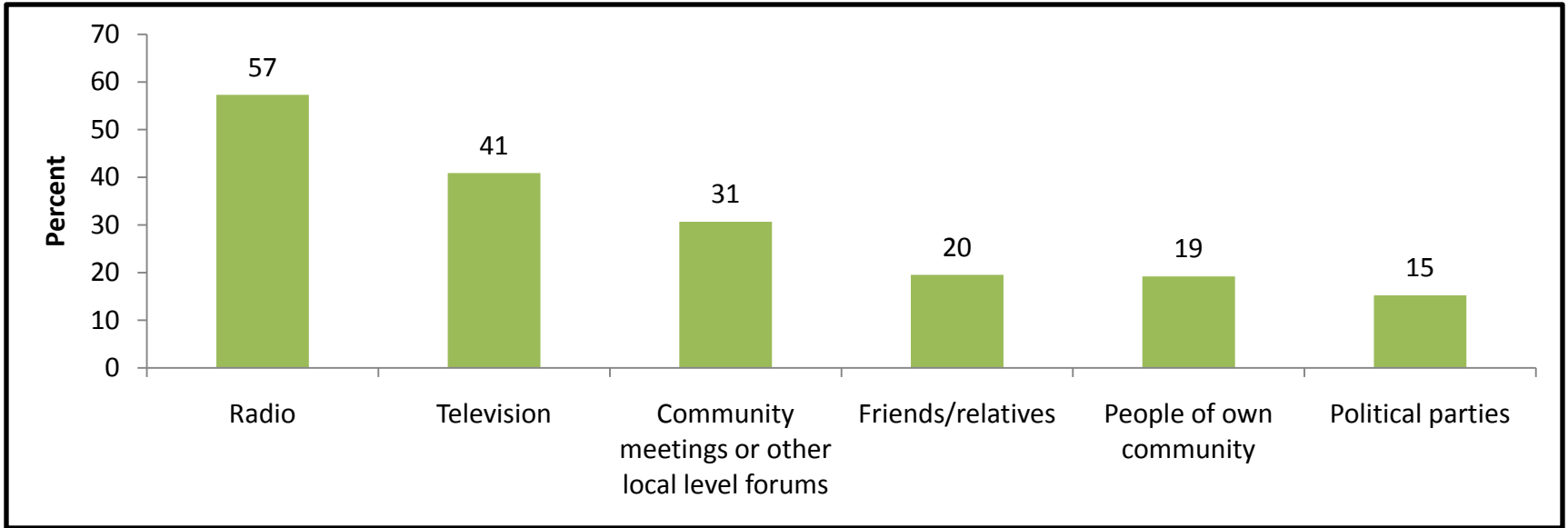


Section D: Federalism

Have you ever heard about federalism? [D1, Base= 3,000]



If you have heard about federalism, what are the main sources from where you get the information about federalism? [D2, Base= 1,614, Percentage based on multiple responses]



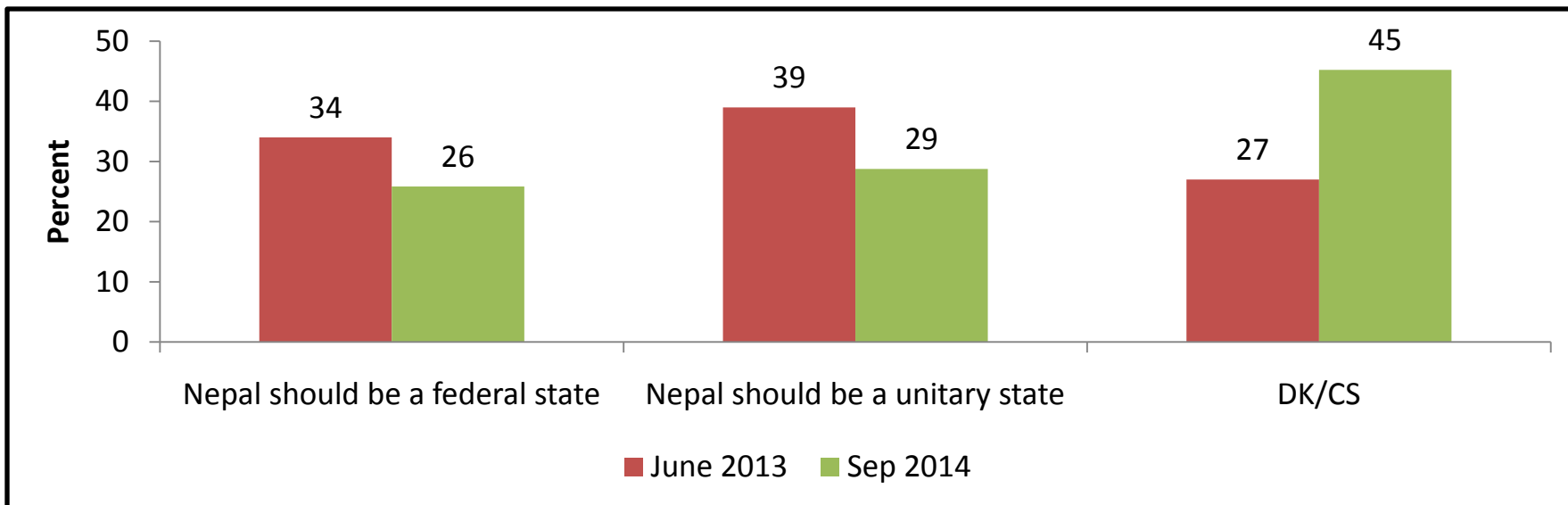
Questions of federalism had been asked in three different ways over the years.

First: Asking whether people prefer a unitary state or a federal state and then mapping their support either for federal state or unitary state in a scale of 0 to 10.

Second: Asking people to rate their support for a federal state in a scale of 0 to 10.

Third: Reading out three statements – one supportive of a loosely defined federal state, second a federal state based on single ethnic identity and third a unitary state and asking people to rate their support for each of the states in a scale of 0 to 10. This has been done by IDA in a survey which is not part of the NCPS series.

Do you think Nepal should be a federal state or a unitary state? [D3, Base= 3,000]



Scale: 0 to 10	All	
	Mean (June 2013)	Mean (Sep 2014)
Mean score for federal state (Base= 775)	8.5	8.1
Mean score for unitary state (Base= 863)	8.9	8.8

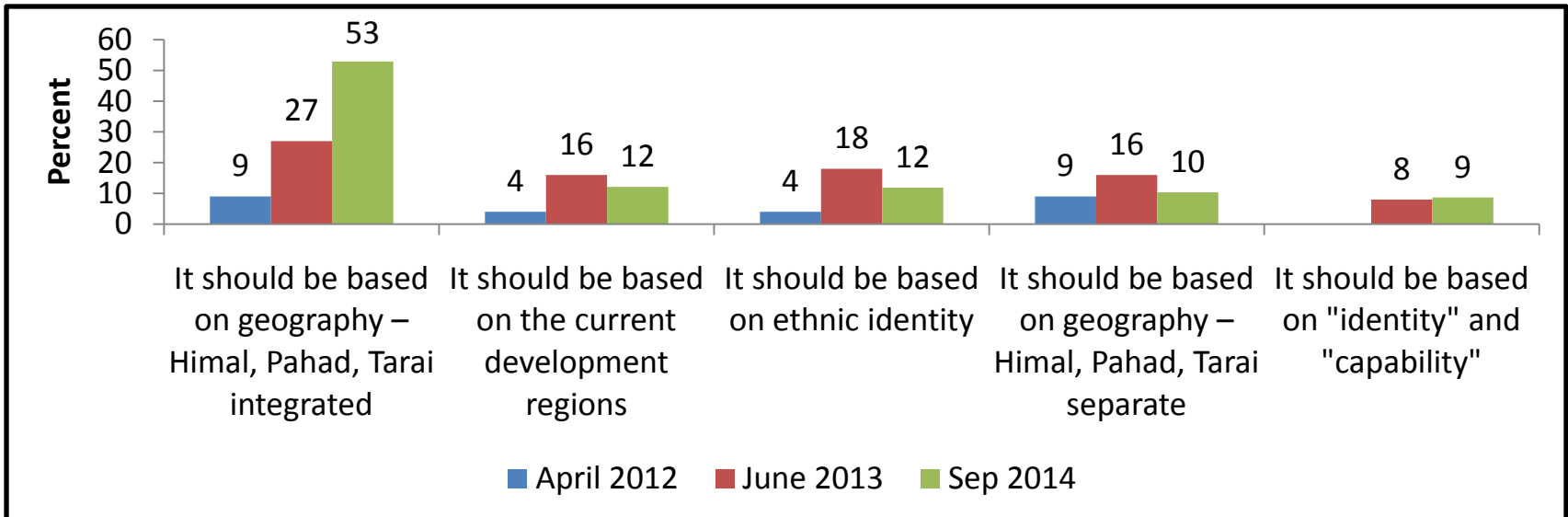
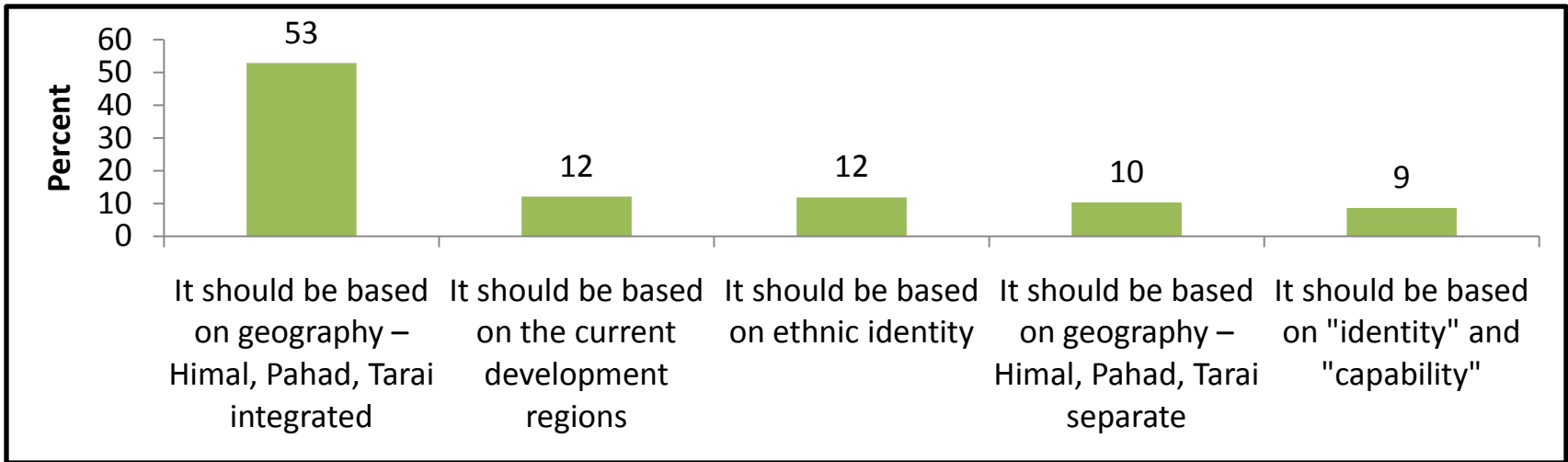
The proportion of respondents who said they had heard about federalism, irrespective of whether they knew what it meant, were asked to rate their support for it on a scale of 0 to 10, with 0 being totally against federalism, 5 being neutral, and 10 being totally supportive of federalism

Mean support for federalism	Mean
April 2012	4.1
June 2011	4.1
February 2011	4.2
August 2010	3.8

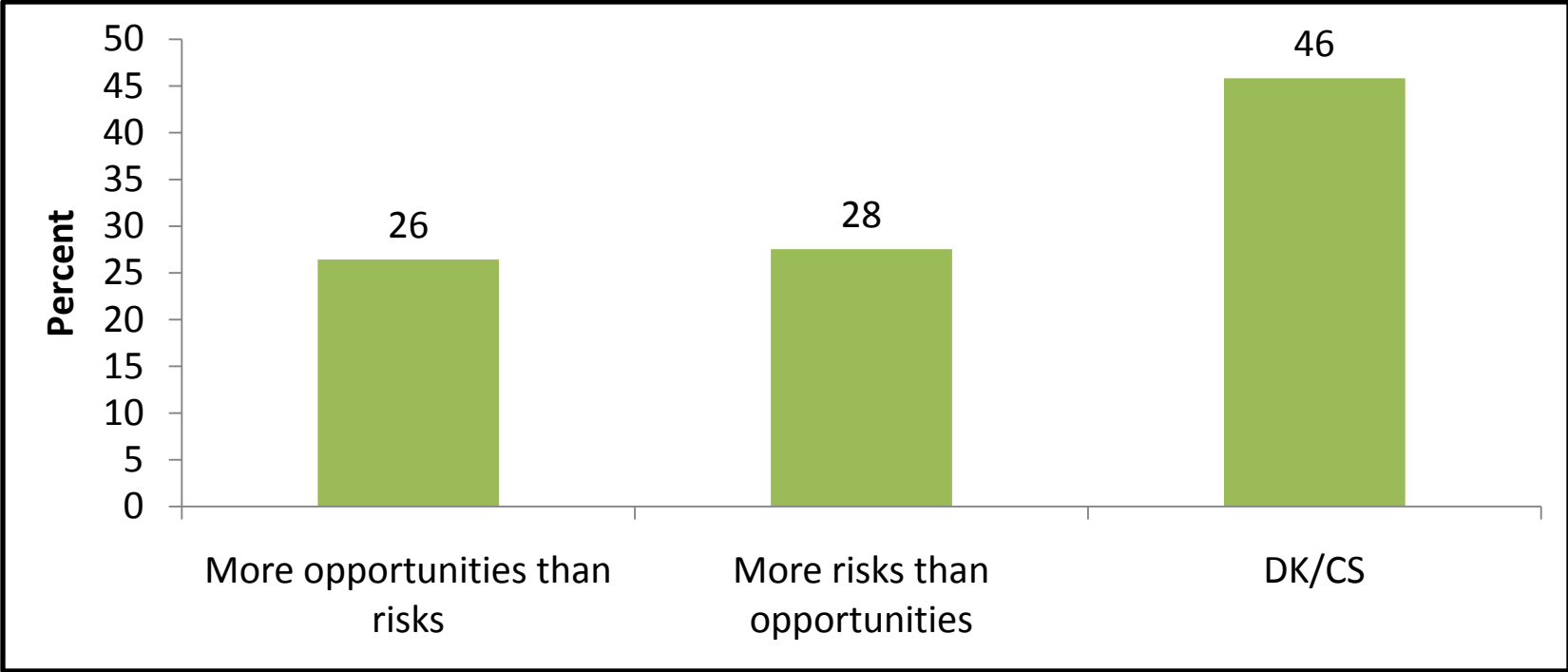
	Support to a system of government in Nepal, in which there would be several separate states with a federal government at the top. (On a scale of 0 to 10, with 0 being totally against, 5 being neutral, and 10 being totally supportive of the concerned system of government)	Support to a system of government in Nepal, in which there would be several separate states, each represented by a single ethnic identity, with a federal government at the top. (On a scale of 0 to 10, with 0 being totally against, 5 being neutral, and 10 being totally supportive of the concerned system of government)	Support to system of government in Nepal, in which there would be a single centralized government, without states. (On a scale of 0 to 10, with 0 being totally against, 5 being neutral, and 10 being totally supportive of the concerned system of government)
February 2013	4.2	1.8	4.4
September 2013	3.1	1.6	5.7
July 2014	3.0	1.2	6.0

Note: This survey done by IDA, but not NCPS series.

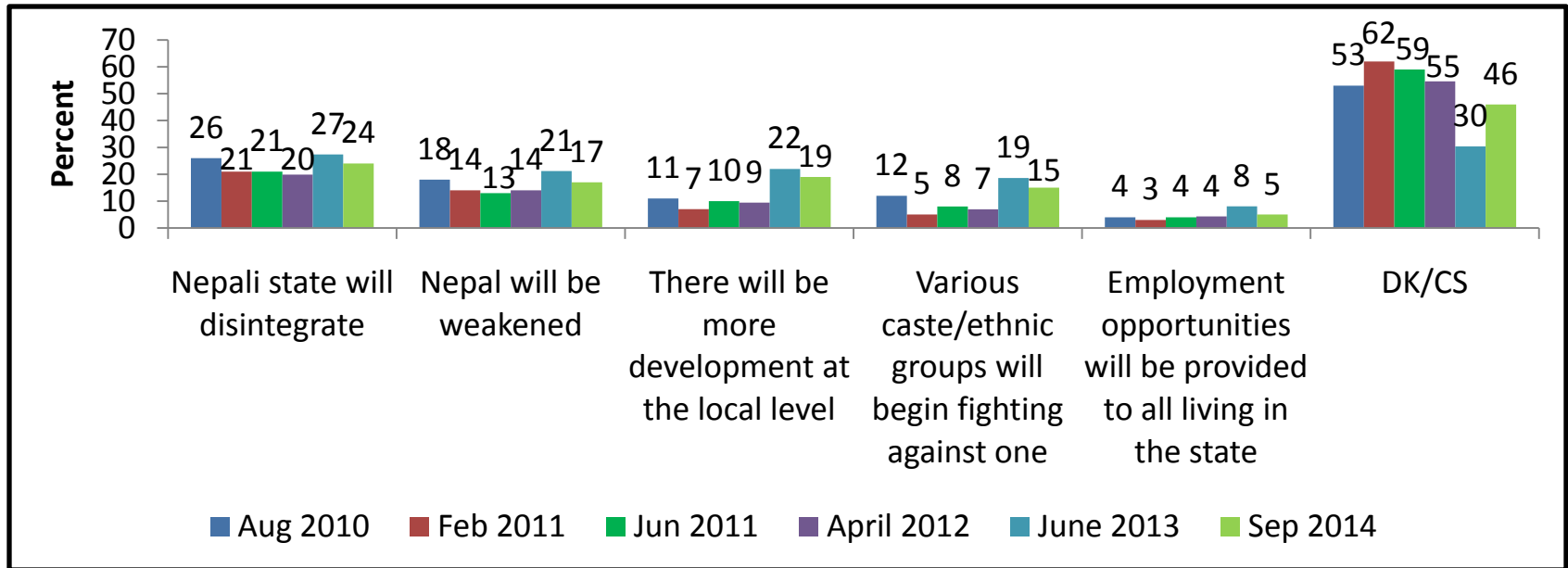
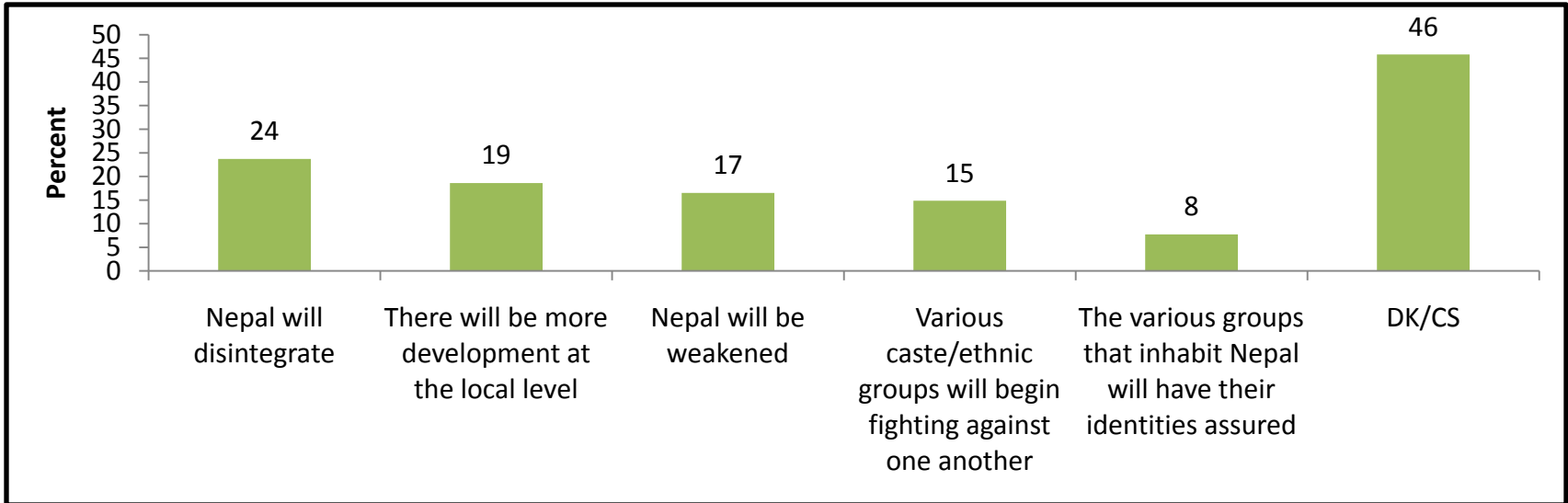
If you think Nepal should be a federal state, what do you think should be the basis for the creation of federal states? [D4, Base= 775]



In your opinion, what will federalism bring about? (Read Aloud) [D5, Base= 3,000]



What do you anticipate with the implementation of federalism (what is your expectation from federalism)? [D6, Base=3,000, Percentage based on multiple responses]



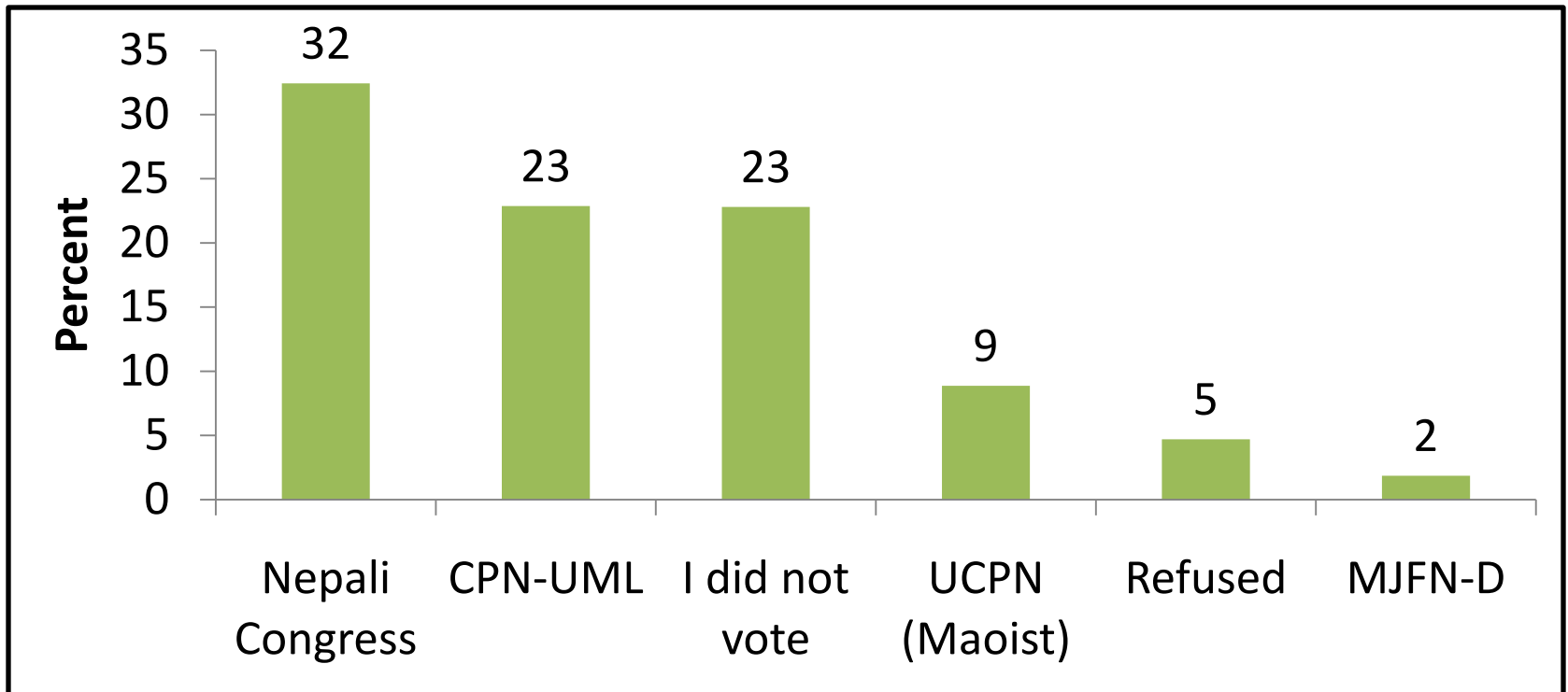
Section E: Trust towards Organizations and Institutes

I would like to know the level of trust you have towards various institutions/organizations. I would like you to express this in number between the scales of 0 to 100: where 0 means 'no trust at all', 100 means 'trust very much' and 50 means 'neither low trust nor high trust'." [Show card, Read out, Rotate the items]

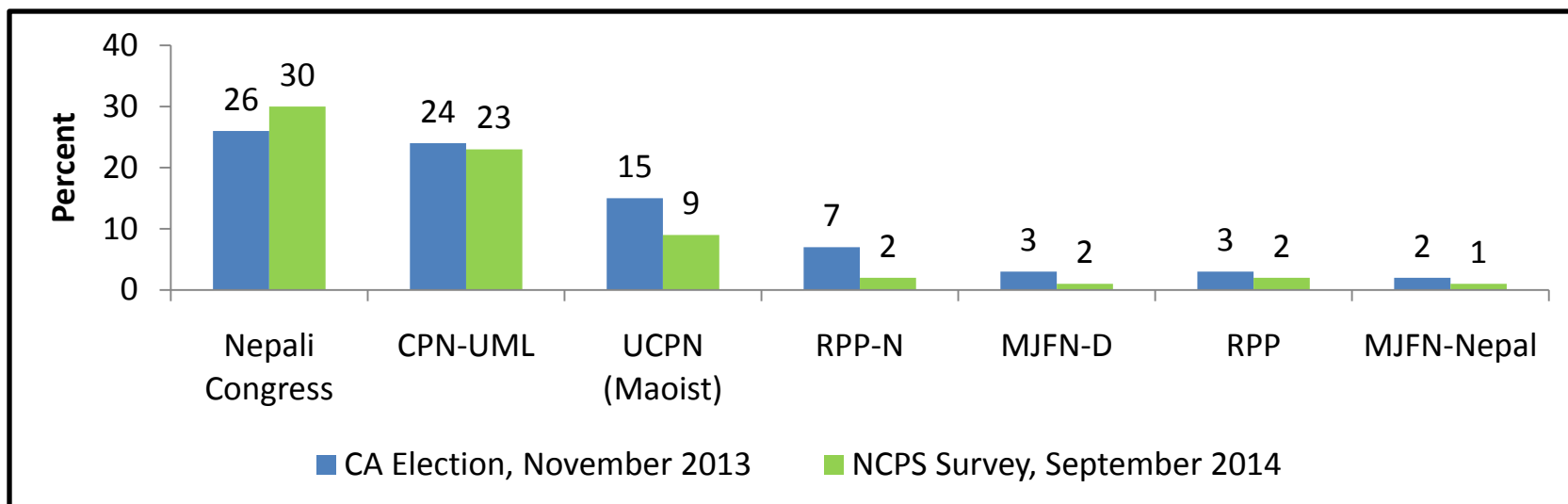
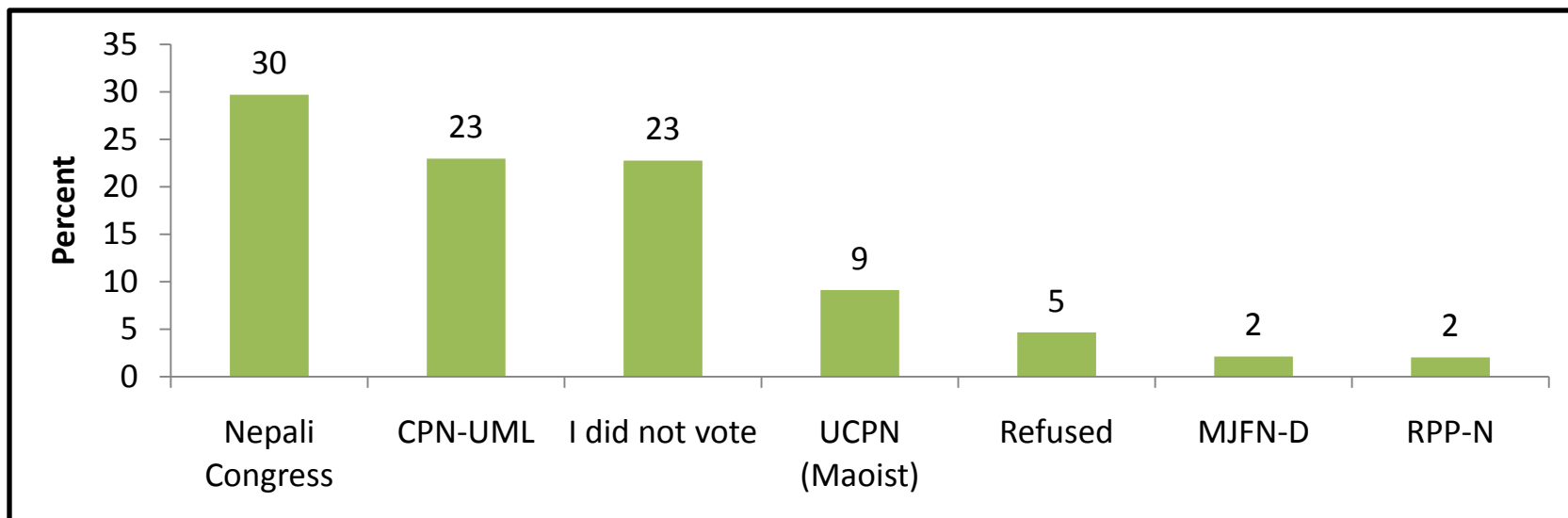
	Feb 2011	June 2011	June 2013	Sep 2014
Constituent Assembly	49	44	48	49
Cabinet	40	34	38	40
Judiciary	54	50	56	52
Political parties (in general)	36	26	26	32
Police	54	45	53	53
Nepali Army	59	53	62	61
Maoist combatants	36	31	28	–
Government civil service	50	45	45	47
T.V.	67	61	65	63
Radio	61	65	69	65
Newspaper	71	57	62	59
Civil society/NGOs	58	53	56	54
Religious organizations	54	51	44	49
Ethnic organizations	49	45	40	43
Election Commission	58	49	52	54
Private sector	54	47	49	51
Labour unions	–	–	–	55
Commission for Investigation of Abuse of Authority (CIAA)	–	–		63
Armed Police	–	–	–	56
Political Youth Organizations	39	28	32	43

Section F: Political Parties

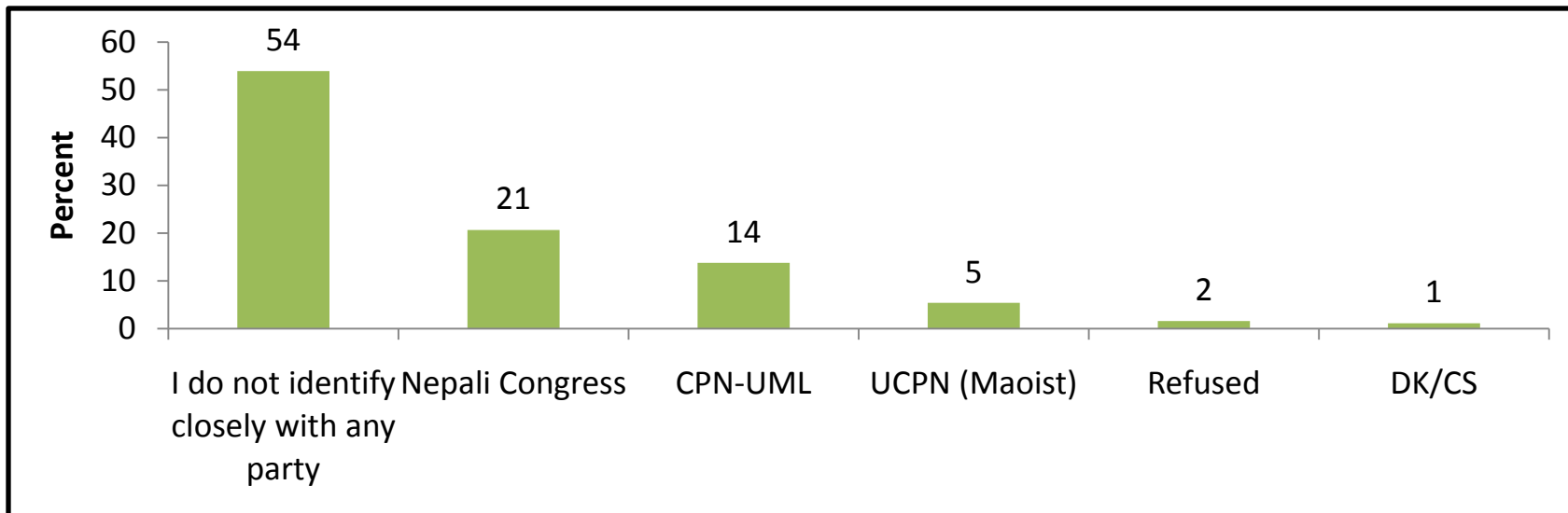
Which political party did you vote for in the second constituent assembly election held in November 2013? (Note: Party voted for in the first past the post system – FPTP)
[F1, Base= 3,000]



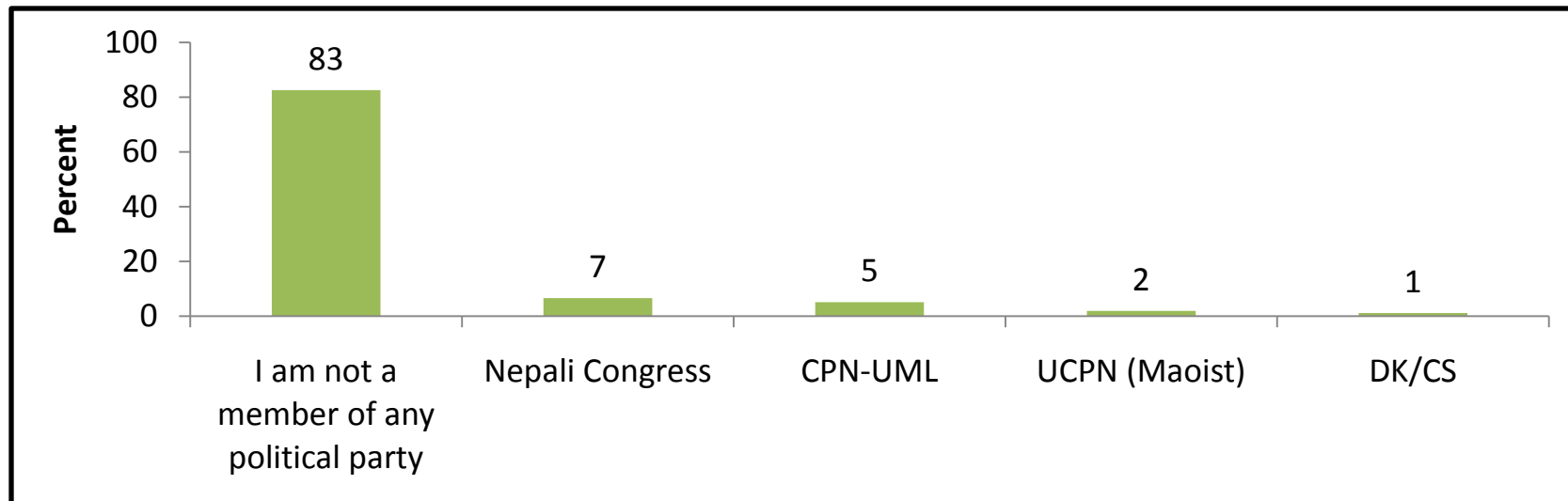
**Which political party did you vote for in the second constituent assembly election held in November 2013?
(Note: Party voted for in the proportional election system) [F2, Base= 3,000]**



Which party do you most closely identify with? [F3, Base= 3,000]

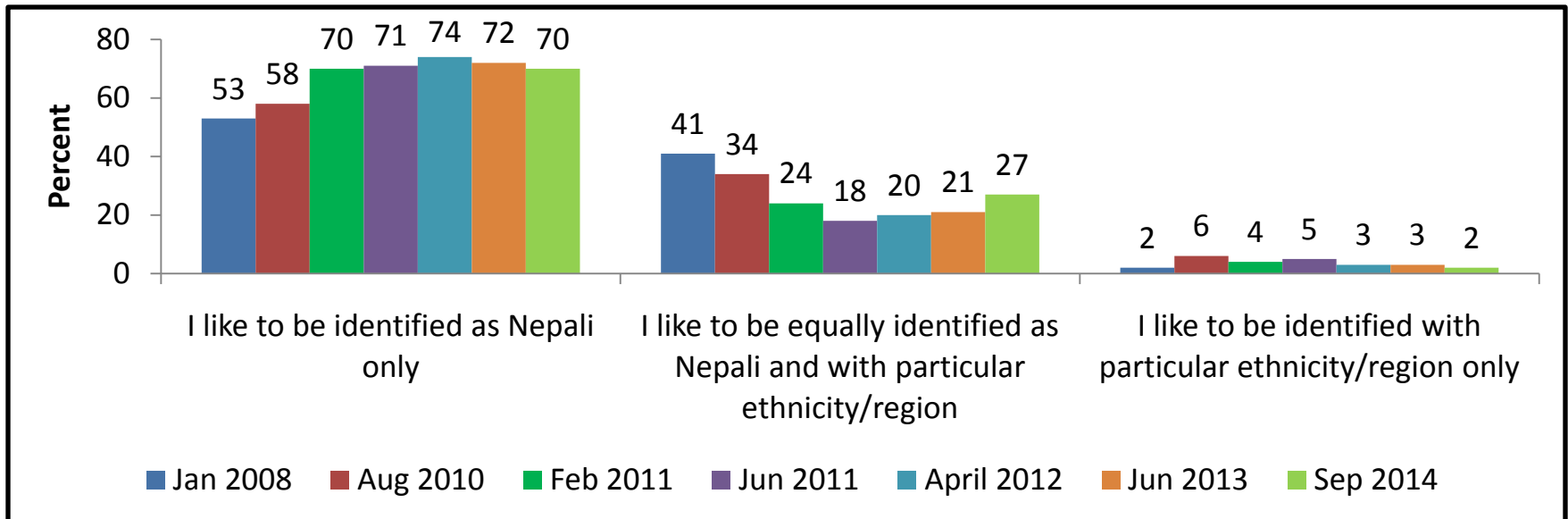
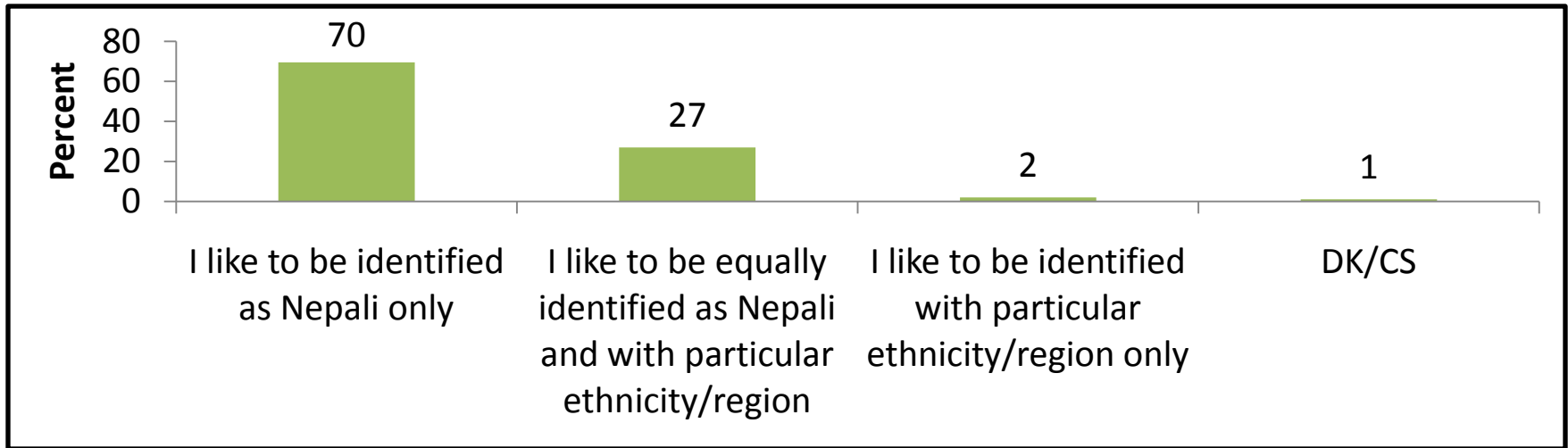


Are you a member of any of the following political parties? [F4, Base= 3,000]

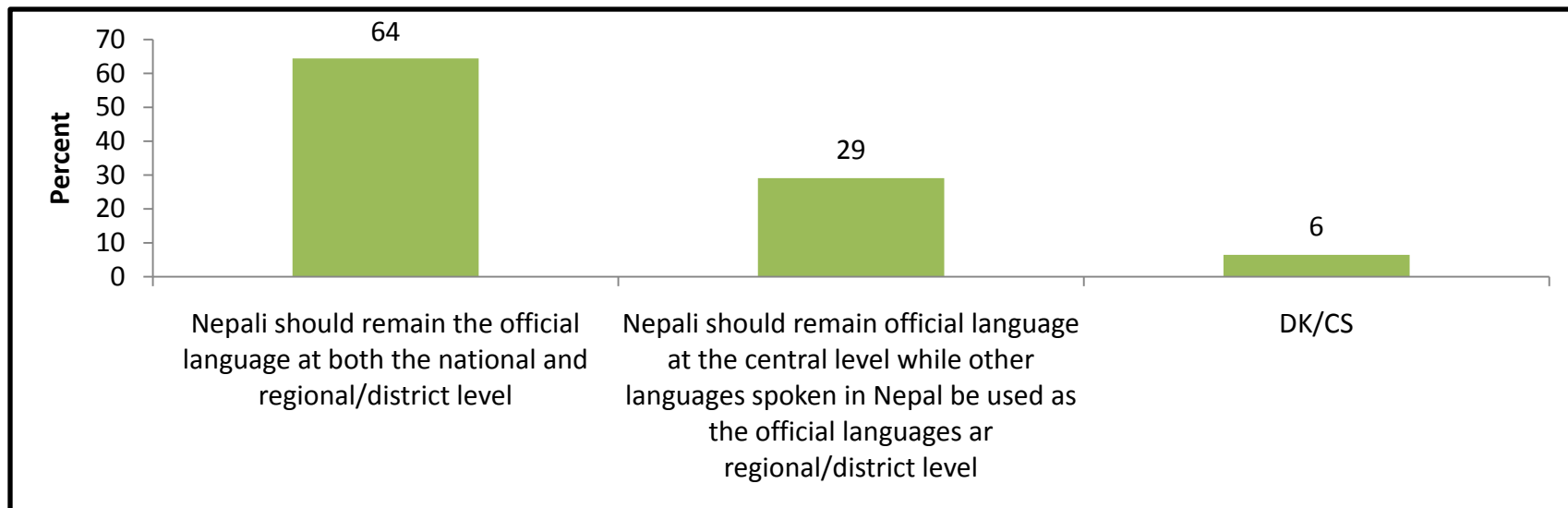


Section G: Contentious Issues

How do you like to identify yourself? [Read aloud] [H1, Base= 3,000]

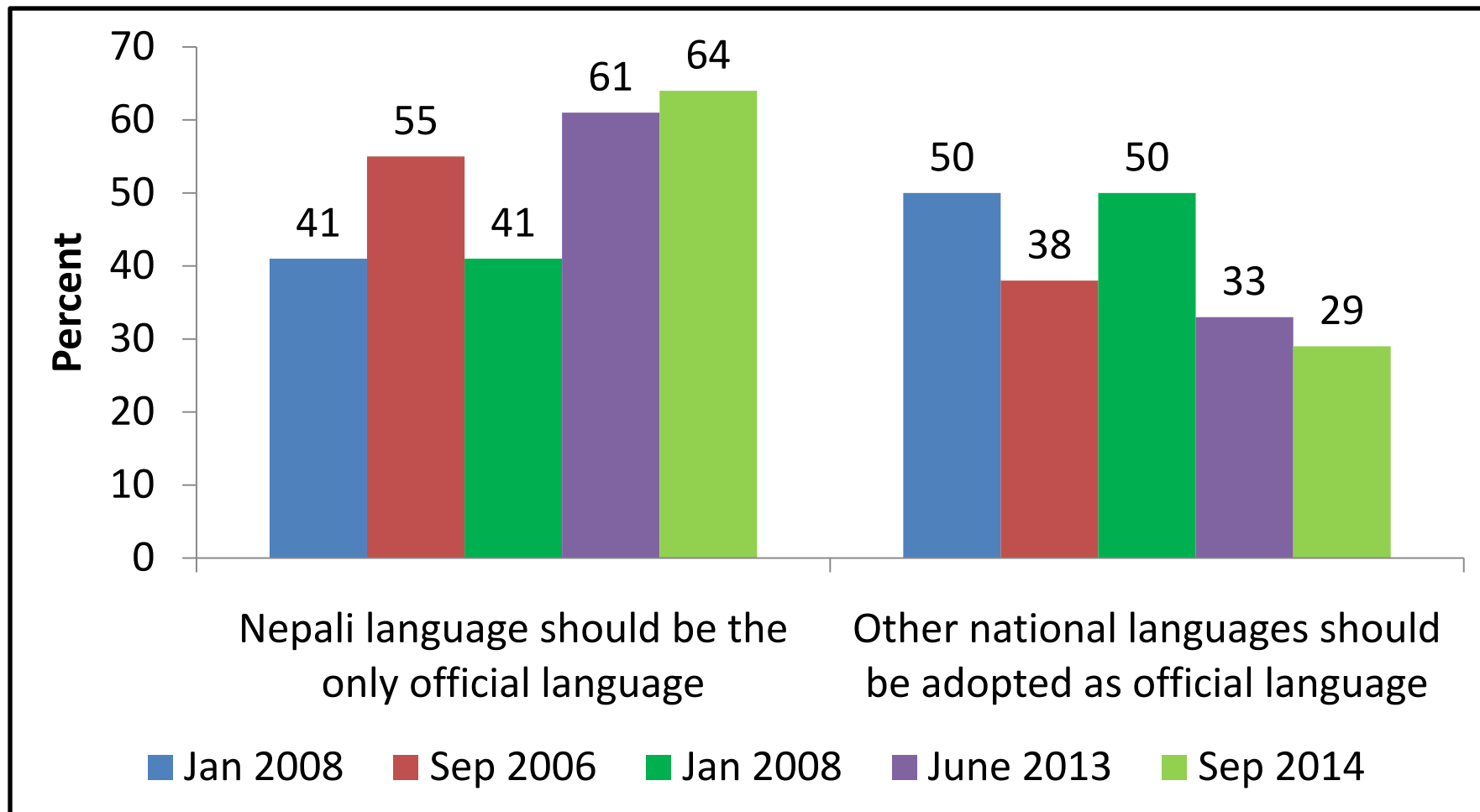


What is your opinion about whether Nepali should remain the official language at national and regional/district levels or Nepali should remain the official language at the central level, while Nepali along with various languages spoken in Nepal be used as official language at regional/district level. [H5, Base= 3,000]

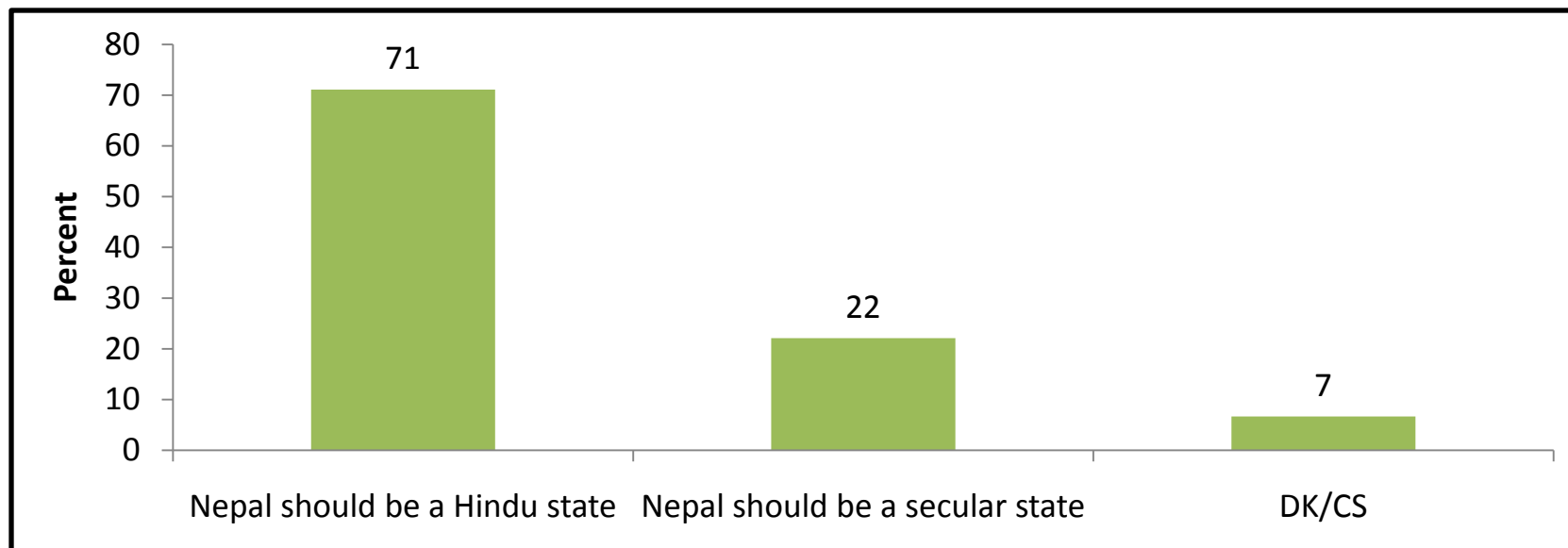


Scale: 0 to 10	All	
	Mean	Base
Mean score for language at both level	8.7	1,933
Mean score for language at diff. level	8.0	873

What is your opinion about whether Nepali should remain the official language at national and regional/district levels or Nepali should remain the official language at the central level, while Nepali along with various languages spoken in Nepal should be official languages at the regional/district levels [H5, Base= 3,000]

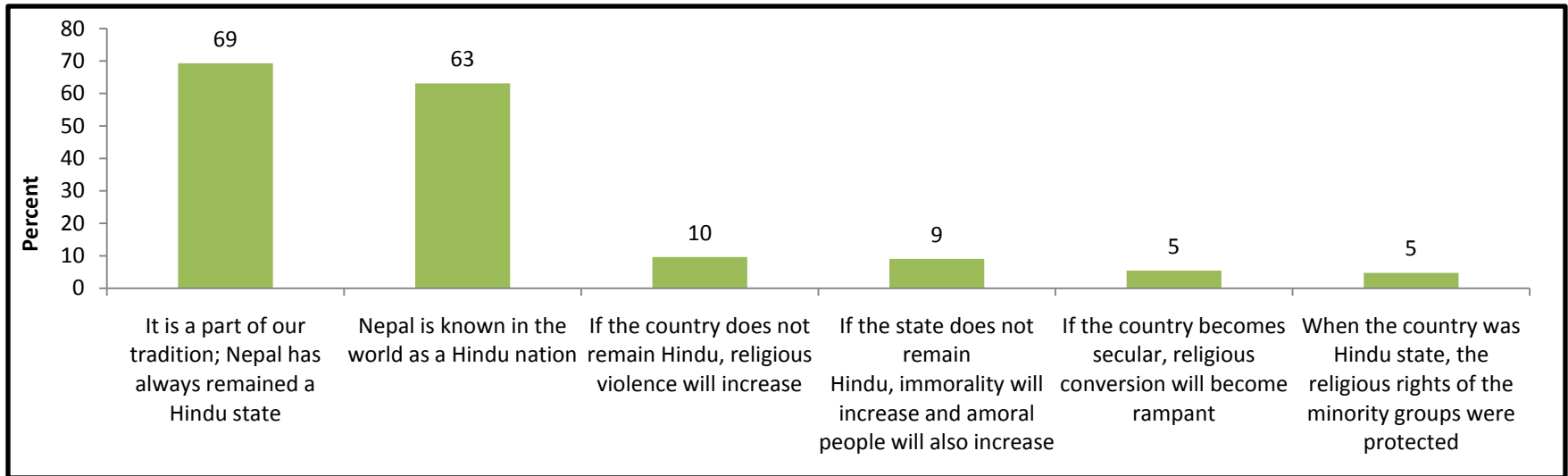


Do you think Nepal should be a Hindu state or a secular state? [H2, Base= 3,000]

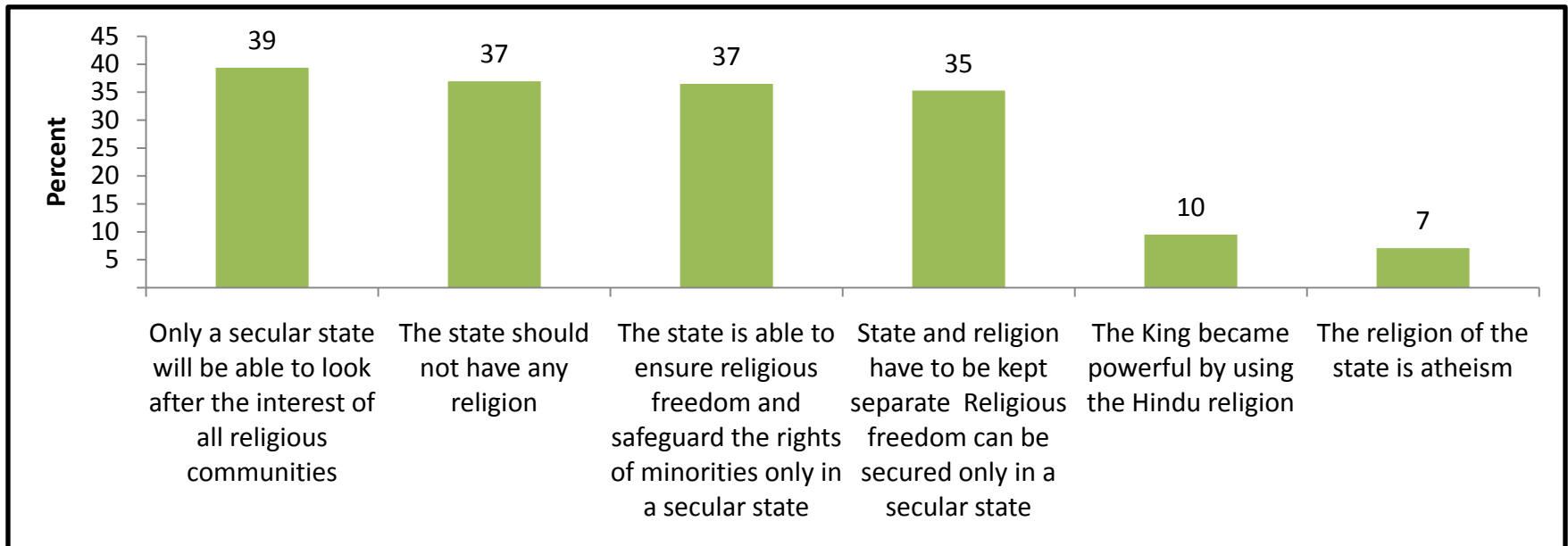


Scale: 0 to 10	All	
	Mean	Base
Mean score for Hindu state	8.7	2,133
Mean score for Secular state	8.6	663

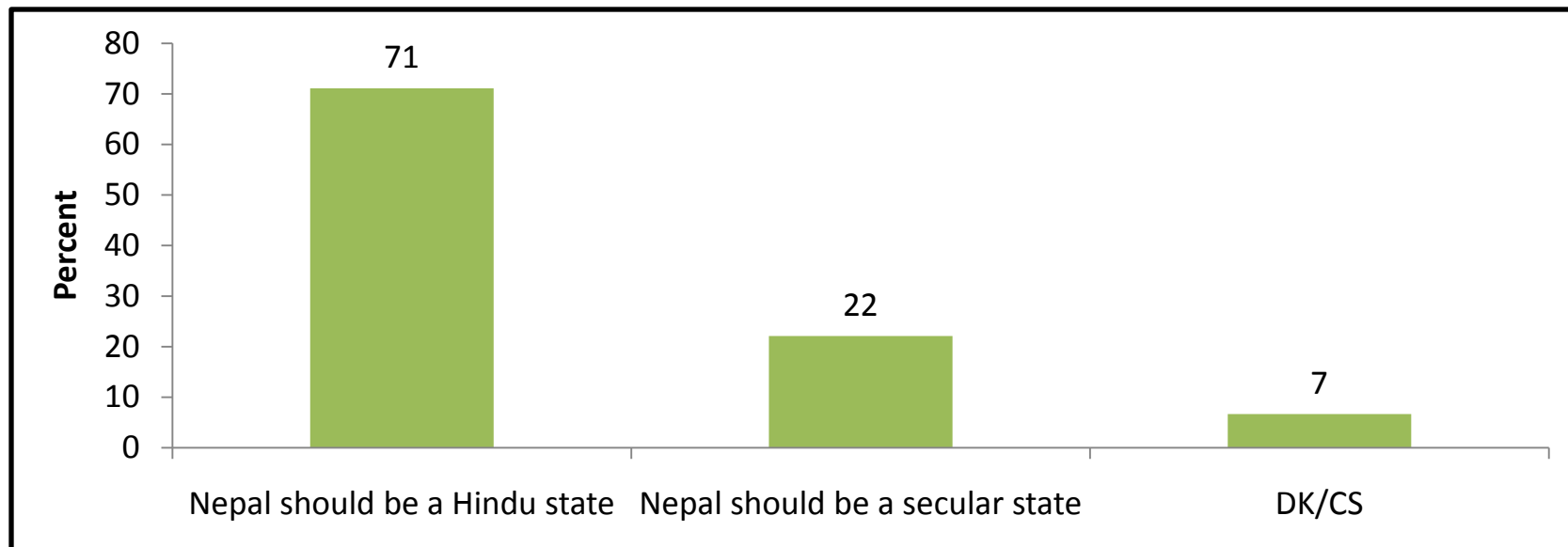
Why do you think Nepal should be a Hindu state? [H3, Base= 2,133, Percentage based on multiple responses]



Why do you think Nepal should be a secular state? [H4, Base= 663, Percentage based on multiple responses]

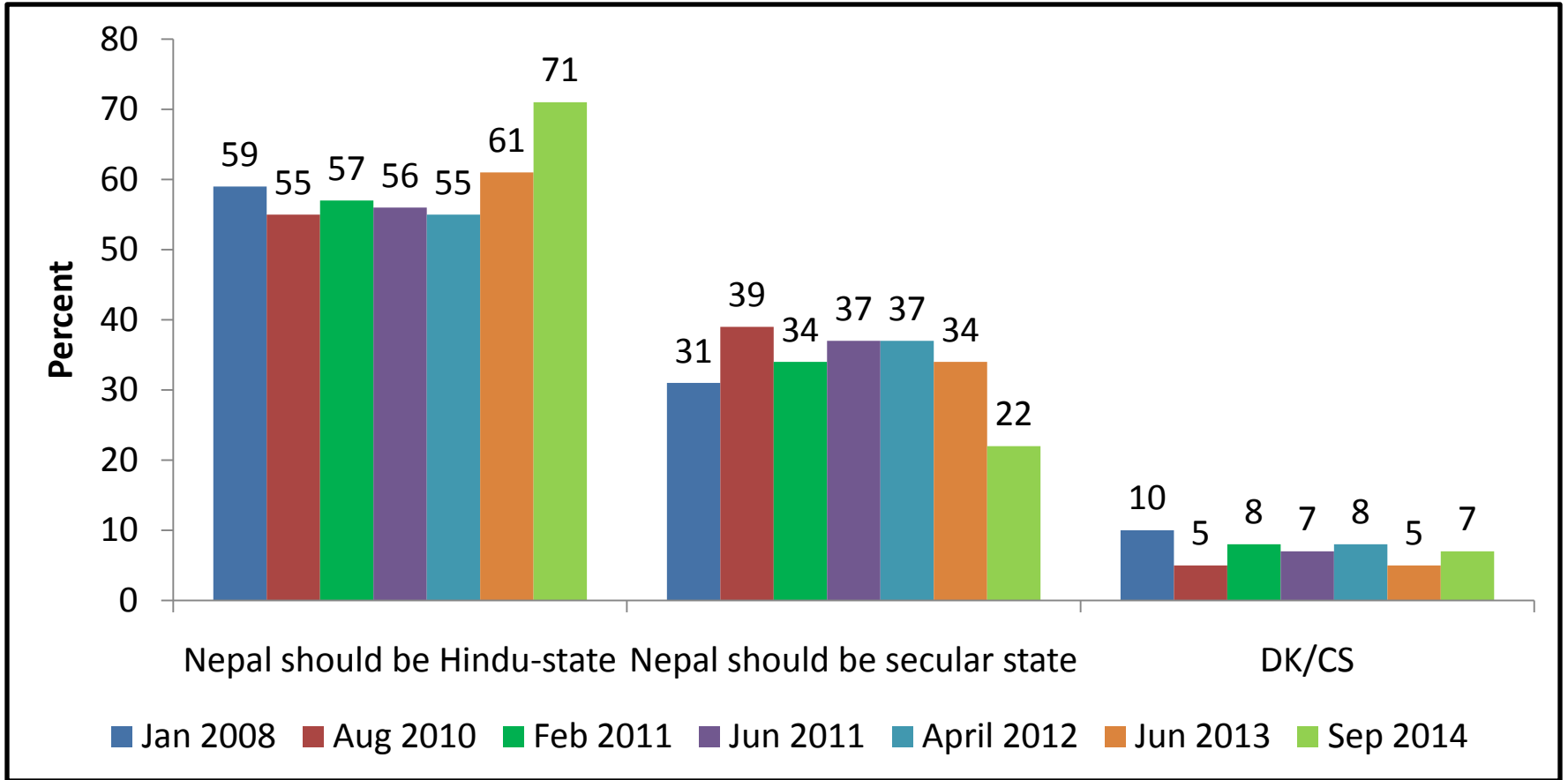


Do you think Nepal should be a Hindu state or a secular state? [H2, Base= 3,000]

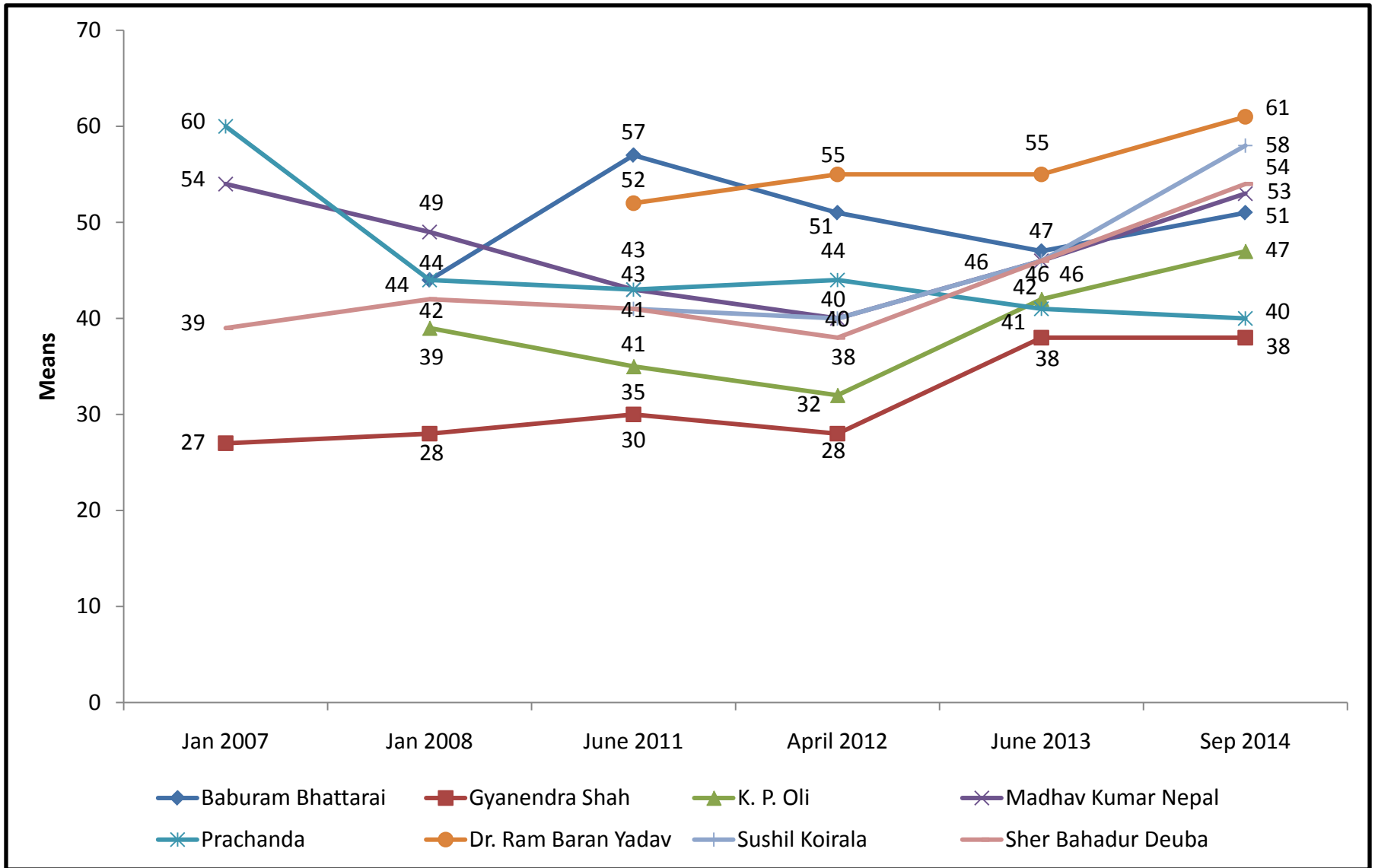


Scale: 0 to 10	All	
	Mean	Base
Mean score for Hindu state	8.7	2,133
Mean score for Secular state	8.6	663

Do you think Nepal should be a Hindu state or a secular state? [H2, Base= 3,000]



Ratings of selected political leaders (In a scale of 0 to 100)



Rate of supports towards some political leaders (On a scale of 0 to 100)

Political Leaders	Jan 2007	Jan 2008	June 2011	April 2012	June 2013	Sep 2014
Ashok Rai (Federal Socialism)	—	—	—	—	26	31
Bijaya Kumar Gachhedar (Forum Loktantrik Nepal)	—	—	25	28	27	33
Baburam Bhattarai (UCPN Maoist)	—	44	57	51	47	51
Chitra Bahadur K.C. (Rastriya Janmorcha)	—	—	30	28	36	35
C.P. Gajurel (CPN-Maoist)	—	—	—	29	31	31
Gyanendra Shah (Former King)	27	28	30	28	38	38
Gagan Thapa (Nepali Congress)	—	—	—	—	54	58
Hridayesh Tripathi (Tarai Madhesh Loktantric Party)	—	40	23	18	27	29
Jhala Nath Khanal (CPN UML)	—	—	39	38	44	51
Jay Prakash Gupta (Forum Gantantrik)	—	—	24	16	20	27
Kamal Thapa (RPP Nepal)	—	23	29	23	33	40
K. P. Oli (CPN UML)	—	39	35	32	42	47
Mohan Vaidya ("Kiran") (CPN-Maoist)	—	—	37	31	33	31
Mahanta Thakur (TAMLOPA)	—	43	28	20	24	29
Matrika Yadav (CPN (Maoist))	—	—	35	29	29	31
Madhav Kumar Nepal (CPN UML)	54	49	43	40	46	53
Narayan Man Bijukchhe (NMKP)	35	36	31	25	34	37
Pashupati Shamsheer Rana (RPP)	34	31	28	25	32	35
Pushpa Kamal Dahal ("Prachanda") (UCPN Maoist)	60	44	43	44	41	40
Ram Chandra Paudel (Nepali Congress)	—	38	41	39	43	50
Dr. Ram Baran Yadav (President)	—	—	52	55	55	61
Ram Bahadur Thapa ("Badal") (CPN-Maoist)	—	39	—	30	34	33
Sushil Koirala (NC)	—	—	41	40	46	58
Sher Bahadur Deuba (Nepali Congress)	39	42	41	38	46	54
Surya Bahadur Thapa (RPP)	34	36	32	28	37	41
Subash Nembang (Speaker)	—	—	—	—	-	55
Sharad Singh Bhandari (Rastriya Madhes)	—	—	—	—	23	27
Upendra Yadav (Madhesi Jana Adhikar Forum)	—	39	27	24	28	33
Khil Raj Regmi (the then Prime Minister)	—	—	—	—	45	—

Keeping in mind the historical contributions made by the head of the state or government, in a scale of 0 and 100 (where 0 is for no contribution or minimal contribution and 100 is for maximum positive contribution), what number would you give for each of them?

Head of the State or Government	Mean
Prithvi Narayan Shah	86
Bhimsen Thapa	78
Junga Bahadur Rana	65
King Tribhuvan	76
King Mahendra	76
Bishweshor Prasad Koirala (BP)	74
Man Mohan Adhikari	72
King Birendra	87
Krishna Prasad Bhattarai	68
Girija Prasad Koirala	71

Demographics

Gender	Population (%)	Sample (%)
Female	51.5	50.0
Male	48.5	50.0
Total	100.0	100.0

Age Group	Population (%)	Sample (%)
20-29	33.9	27.2
30-39	24.7	25.5
40-49	17.4	20.5
50-59	11.9	12.3
60-69	7.5	9.8
70-79	3.6	3.8
80+	1	0.8
Total	100.0	100.0

Religion	Population (%)	Sample (%)
Hinduism	81.3	85.8
Buddhism	9.0	7.3
Islam	4.4	4.5
Christianity	1.4	1.0
Kirat	3.1	1.5
Atheist	0.0	0.0
Others	0.8	0.0
Total	100.0	100.0

Education	Sample (%)
Illiterate	30.7
Literate	13.1
Primary	14.7
Lower Sec.	12.2
Sec.	14.0
SLC	4.3
Inter.	7.8
Bachelor & above	3.1
Total	100.0

Residence	Population (%)	Sample (%)
Rural	83.0	83.0
Urban	17.0	17.0
Total	100.0	100.0

Development region	Population (%)	Sample (%)
Eastern	21.9	21.9
Central	36.4	36.5
Western	18.6	18.6
Mid-Western	13.3	13.4
Far-Western	9.6	9.6
Total	100.0	100.0

Ecological region	Population (%)	Sample (%)
Mountain	6.7	6.7
Hill	43.0	42.9
Tarai	50.2	50.3
Total	100.0	100.0

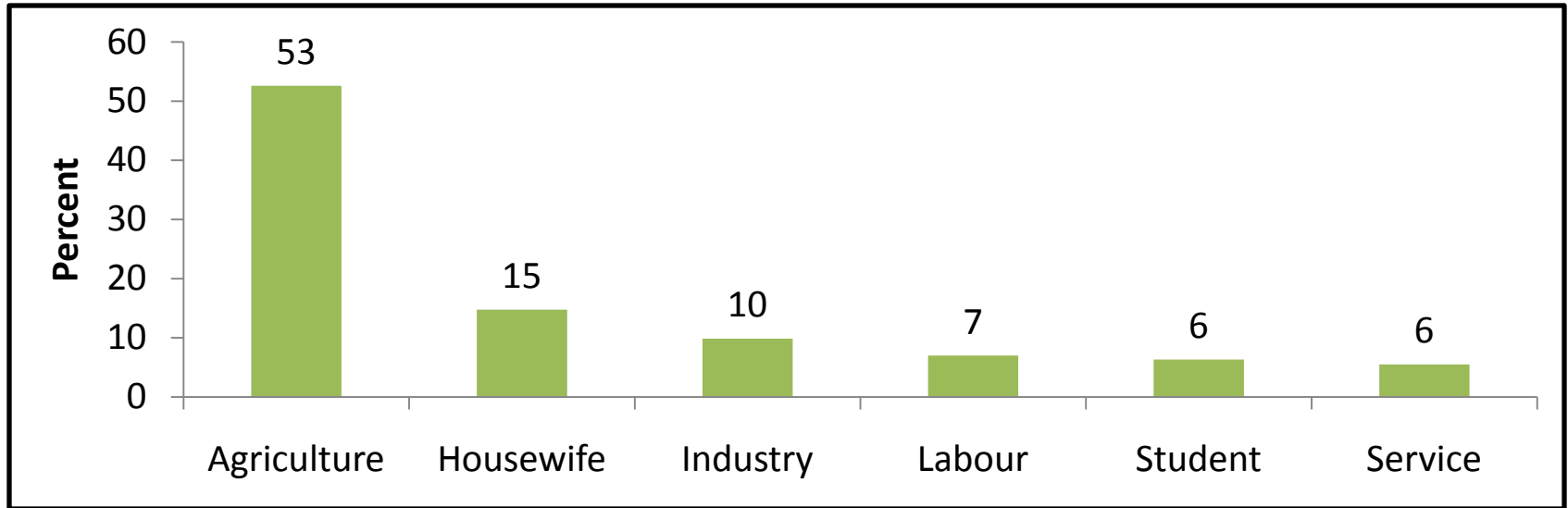
Caste/ethnic Group	Population %	Sample %
Chhetri	16.6	15.2
Bahun	12.1	13.5
Magar	7.1	7.7
Tharu	6.6	7.7
Tamang	5.8	5.6
Newar	4.9	5.4
Kami	4.8	4.2
Muslim	4.3	4.6
Yadav	3.9	4.0
Rai	2.3	1.6
Gurung	1.9	2.3
Dami/Pariyar	1.7	1.9
Thakuri	1.6	1.3
Limbu	1.4	1.3
Sarki/Mijar	1.4	1.5
Teli	1.3	1.6
Chamar	1.2	2.0
Koiri	1.1	1.2
Sanyasi	0.8	0.5
Kurmi	0.8	1.4
Dhanuk	0.8	0.2
Musahar	0.8	1.4
Dusahad/Pasawan	0.7	0.8
Mallaha	0.6	0.2
Kewat	0.5	0.4

Tarai Brahman	0.5	0.6
Baniya	0.5	0.5
Dhobi	0.4	0.4
Sherpa	0.4	0.2
Gharti/Bhujel	0.4	0.3
Kalwaar	0.4	0.3
Kumal	0.4	0.6
Kanu	0.4	0.5
Hajam	0.4	0.4
Rajbanshi	0.4	0.7
Dhobi	0.4	0.4
Halwai	0.3	0.2
Majhi	0.3	0.2
Sudi	0.3	0.6
Lohar	0.3	0.1
Tatma	0.3	0.1
Khatwe	0.3	0.6
Sonar	0.2	0.2
Kumhar	0.2	0.2
Bantar/Sardar	0.2	0.4
Kahar	0.2	0.2
Sunuwar	0.2	0.8
Nuniya	0.2	0.6
Sunar	0.2	0.1
Others	7.2	3.0
Total	100.0	100.0

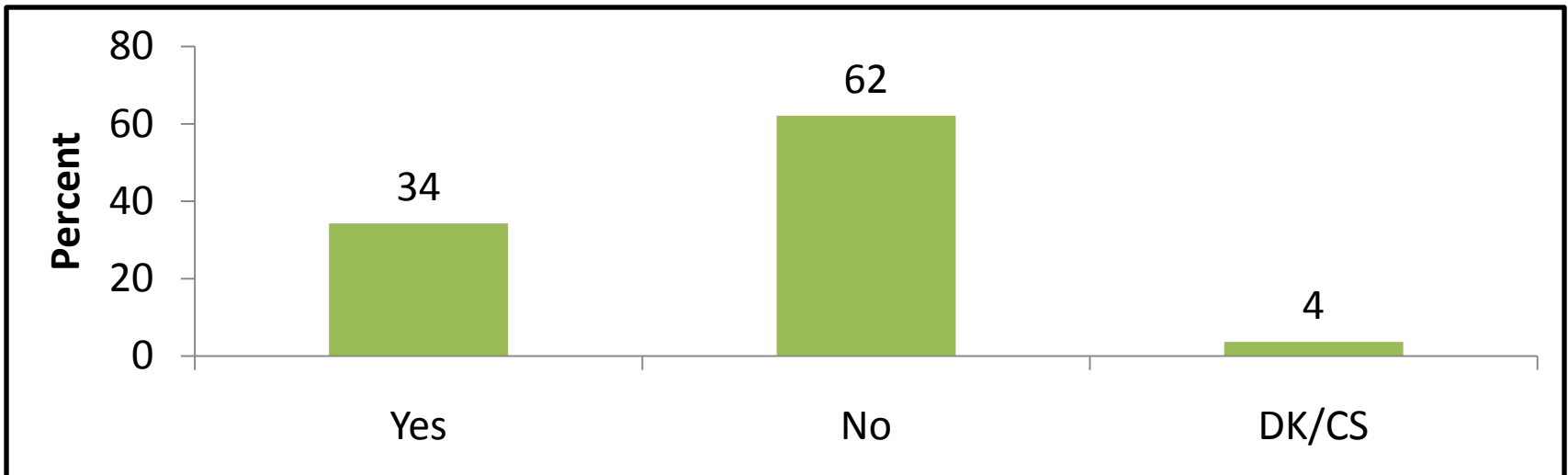
Broad caste/ethnic group	Sample %
Hill Caste	30.7
Hill Ethnic	20.9
Hill Dalit	7.6
Newar	5.4
Madhesi Caste	14.9
Madhesi / Tarai Ethnic	10.1
Madhesi Dalit	5.8
Muslim	4.6
Total	100.0

Background information

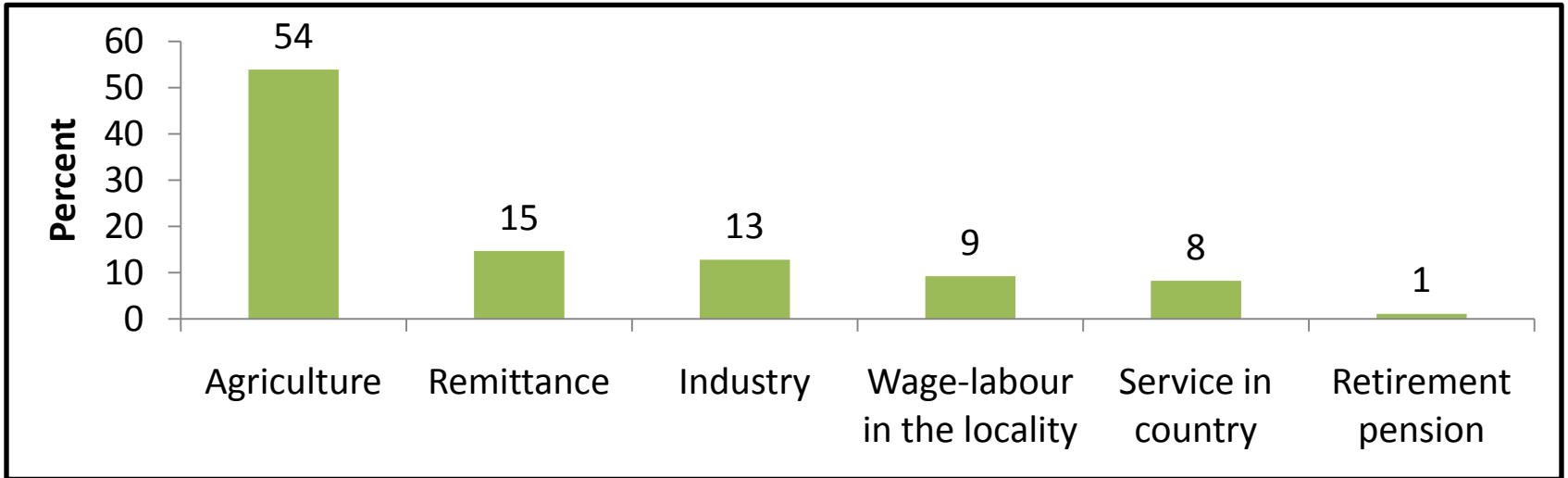
What is your main occupation? [A7, Base= 3,000]



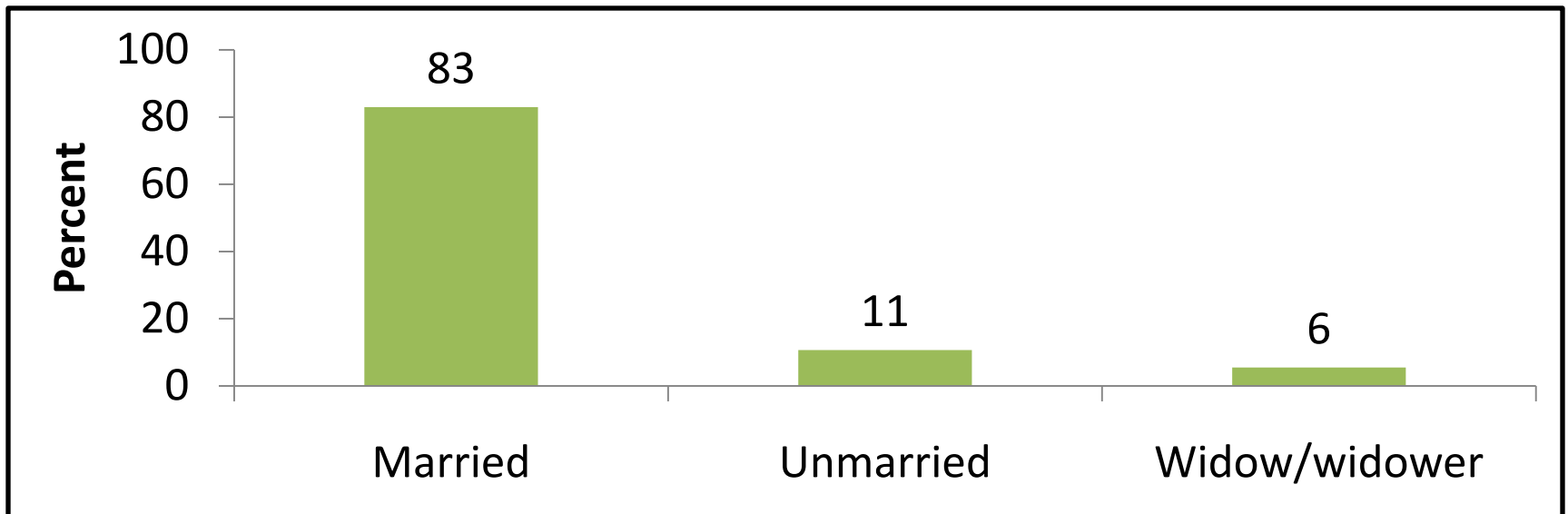
Do you have any member of your household working outside of Nepal? [A8, Base= 3,000]



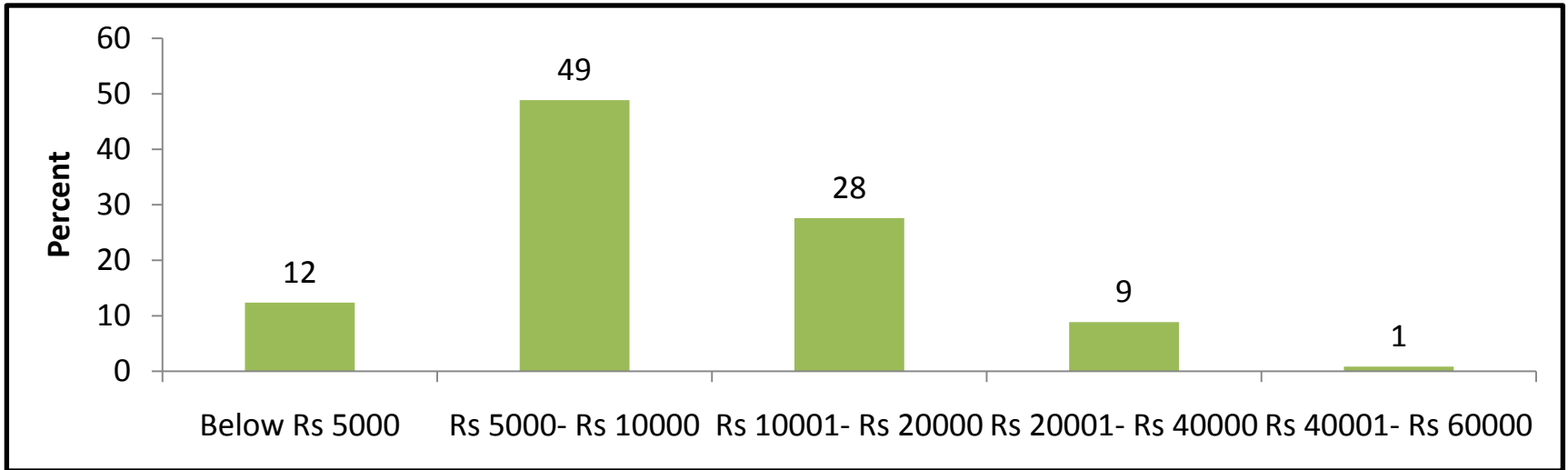
What is the major source of income for your family? [A9, Base= 3,000]



Marital Status [A10, Base= 3,000]



To meet all the expenses in your household, on average, how much is spent during each month?
[A14, Base= 3,000]



Survey Schedule and Facts

- Pretest : 7 & 8 August, 2014
- Training : 22 to 26 August, 2014
- Field work start : 29 August, 2014
- Field work end : 29 September, 2014
- Supervisors : 24
- Enumerators : 48

Thank
You!